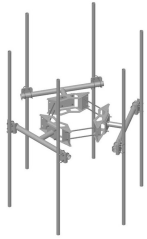


MC-DPM2M-6-126



Monopole Co-location Dual Pipe Mount Kit, 12 in to 50 in OD, 4 ft 9 in face, includes pipes

Product Classification

Product Type Co-location dual pipe mount kit

General Specifications

Mounting Monopole, 304.8–1270 mm (12–50 in) OD

Pipe, quantity 6

Sectors, quantity 3

Dimensions

Height 3,200.4 mm | 126 in

Face Width 1.463 m | 4.8 ft

Width 1,447.8 mm | 57 in

Length 355.6 mm | 14 in

Pipe Length 3,200.4 mm | 126 in

Mounting Diameter, maximum 1270 mm | 50 in

Mounting Diameter, minimum 304.8 mm | 12 in

Pipe Outer Diameter 60.96 mm | 2.4 in

Stand-off Distance 355.6 mm | 14 in

Mounting Circumference, maximum 3,990.34 mm | 157.1 in

Mounting Circumference, minimum 1,196.34 mm | 47.1 in

Material Specifications

Material Type Hot dip galvanized steel

Mechanical Specifications

Wind Rating 120 mph (BWS) at 150 ft AGL | 140 mph (3-second gust) at 150 ft AGL using Exposure D per FBC

Wind Rating Criteria Two 72 in x 8 in panel antennas per sector

MC-DPM2M-6-126

Wind Rating Test Method TIA/EIA-222-G

Packaging and Weights

Included Dual pipe frames | Pipe mounts | Ring mount

Packaging quantity 1

Weight, net 351.489 kg | 774.9 lb

Regulatory Compliance/Certifications

Agency

ISO 9001:2015



Classification

Designed, manufactured and/or distributed under this quality management system

* Footnotes

Wind Rating BWS—Base Wind Speed; FBC—Florida Building Code