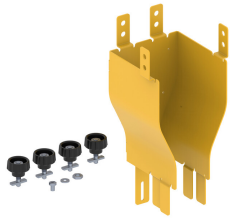


FGS-MDSA-RC



FiberGuide® 4x4 to 2x4in Metal Reducer, Yellow

4X4 TO 2X4 IN REDUCER YELL,
FGS KIT

Product Classification

Regional Availability	Asia Australia/New Zealand EMEA Latin America North America
Portfolio	CommScope®
Product Type	Reducer
Product Brand	FiberGuide®
Product Series	FGS

General Specifications

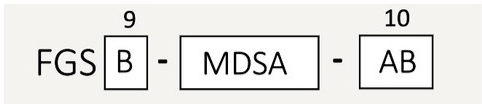
Color	Yellow
Orientation	Vertical
Section Type	Reducer

Dimensions

System Dimensions	102 mm x 102 mm (4 in x 4 in) 51 mm x 102 mm (2 in x 4 in)
--------------------------	--

Ordering Tree

FGS-MDSA-RC



Section Color

9	empty	yellow
	B	black

Section Size

10	AB	4 x 4 in to 4 x 6 in
	AC	4 x 4 in to 2 x 2 in
	C2C	2 x 2 in to dual 2 x 2 in
	F2B	4 x 12 in to dual 4 x 6 in
	FB	4 x 4 in to 4 x 6 in
	FB-L	4 x 12 in to left 4 x 6 in , black*
	FB-R	4 x 12 in to right 4 x 6 in , black*
	HF-L	4 x 24 in to left 4 x 12 in , black*
	HF-R	4 x 24 in to right 4 x 12 in , black*
	HF	4 x 24 in to 4 x 12 in
	GA	2 x 6 in to 4 x 4 in
	GB	2 x 6 in to 4 x 6 in
	MF	4 x 18 in to 4 x 12 in

* Only comes in black

Material Specifications

Material Type Steel

Packaging and Weights

Packaging quantity 1

Weight, net 0.29 kg | 0.639 lb