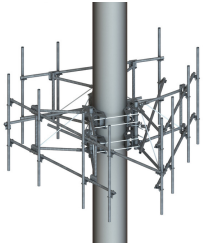


# MCG22-12M-9-126



G22 High Capacity 3-Sector Monopole Frame, 12 ft 6 in face, includes nine 126 in pipes; For patents, see [www.cs-pat.com](http://www.cs-pat.com).

## OBSOLETE

This product was discontinued on: July 29, 2022

### Replaced By:

MCG22HD-12M-12-126 G22HD High Capacity 3-Sector Monopole Frame with 2 7/8in OD x 12.5ft face. Includes twelve 2 3/8in OD x 126in antenna pipes

## Product Classification

**Product Type** High capacity monopole sector frame

## General Specifications

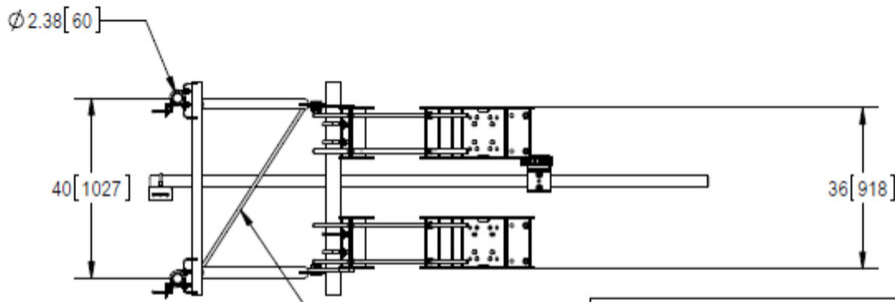
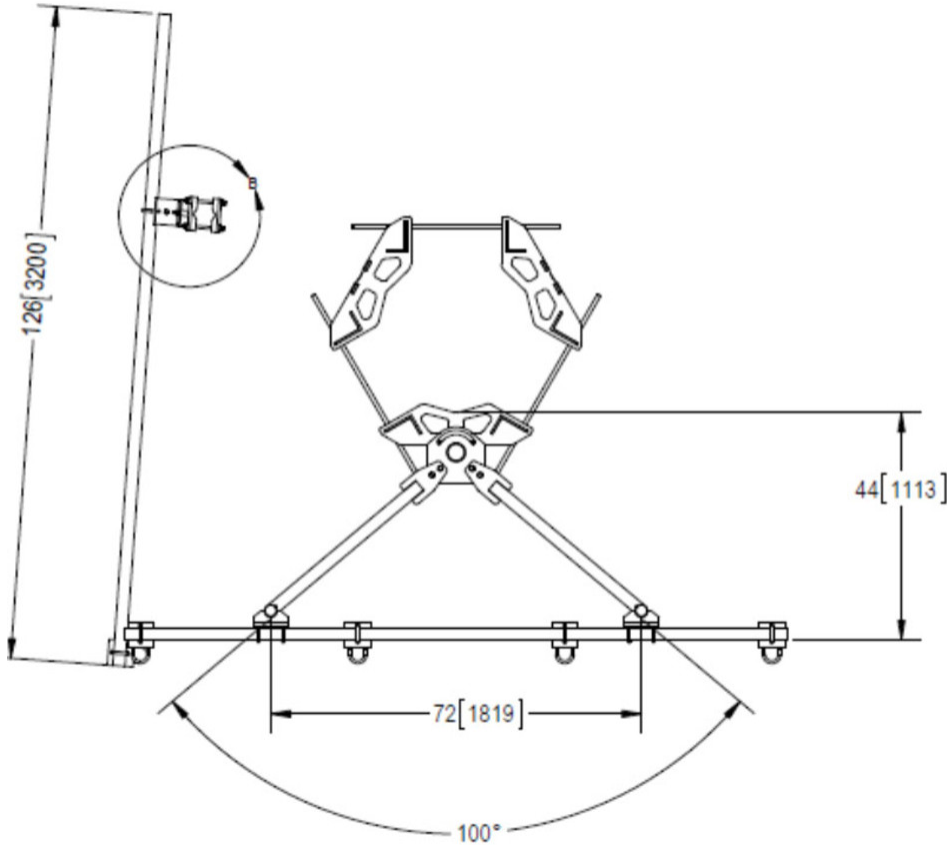
**Mounting** Monopole, 381–1270 mm (15–50 in) OD  
**Pipe, quantity** 9  
**Sectors, quantity** 3

## Dimensions

**Height** 3,200.4 mm | 126 in  
**Face Width** 3.81 m | 12.5 ft  
**Width** 3,810 mm | 150 in  
**Pipe Length** 3,200.4 mm | 126 in  
**Face Support Pipe Diameter** 60.325 mm | 2.375 in  
**Mounting Diameter, maximum** 1270 mm | 50 in  
**Mounting Diameter, minimum** 381 mm | 15 in  
**Pipe Outer Diameter** 60.325 mm | 2.375 in  
**Stand-off Distance** 1,117.6 mm | 44 in

## Outline Drawing

# MCG22-12M-9-126



**MUST BE INSTALLED WITH  
DIAGONALS AS SHOWN**

|                                   |
|-----------------------------------|
| COMMSCOPE, INC. OF NORTH CAROLINA |
| TITLE                             |
| MCG22 SERIES DRAWING              |

## Material Specifications

### Material Type

Hot dip galvanized steel

## Mechanical Specifications

### Load Capacity

With additional stiff arm at 300 ft AGL: 600 lb per pipe w/out ice / 1775 lb per pipe including ice

# MCG22-12M-9-126

---

|  |   |
|--|---|
| <b>Wind Rating</b>                           | For Specifications, please contact your local ANDREW representative |
| <b>Wind Rating Test Method</b>               | TIA/EIA-222   |
| <b>Wind Rating with Additional Stiff Arm</b> | 300 ft AGL: 120 mph (BWS) without ice /60 mph with ice              |

## Packaging and Weights

|                           |   |
|---------------------------|---|
| <b>Included</b>           | Pipe mounts   Plain end pipes (9)   Ring mounts (2)   Sector frames (3)   Stiff arm |
| <b>Packaging quantity</b> | 1   |
| <b>Weight, net</b>        | 883.144 kg   1947 lb  |

## Regulatory Compliance/Certifications

| <b>Agency</b> | <b>Classification</b>  |
|---------------|--|
| CHINA-ROHS    | Above maximum concentration value  |
| ISO 9001:2015 | Designed, manufactured and/or distributed under this quality management system |
| ROHS          | Compliant/Exempted   |
| UK-ROHS       | Compliant/Exempted   |



## \* Footnotes

|  |  |
|--|--|
| <b>Wind Rating</b>                           | BWS—Base Wind Speed; FBC—Florida Building Code |
| <b>Wind Rating with Additional Stiff Arm</b> | BWS—Base Wind Speed; FBC—Florida Building Code |