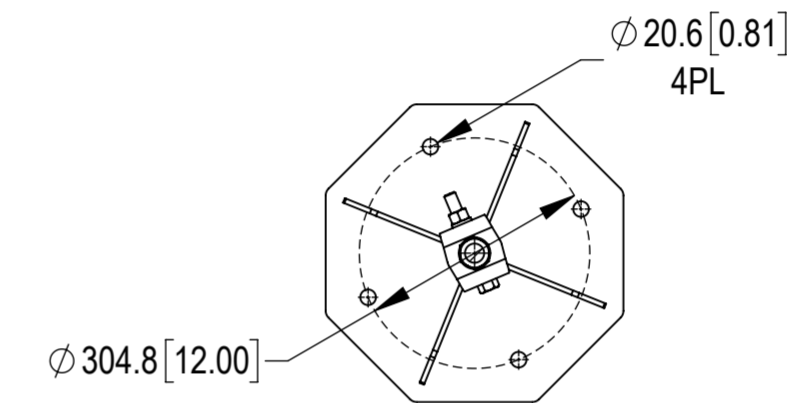
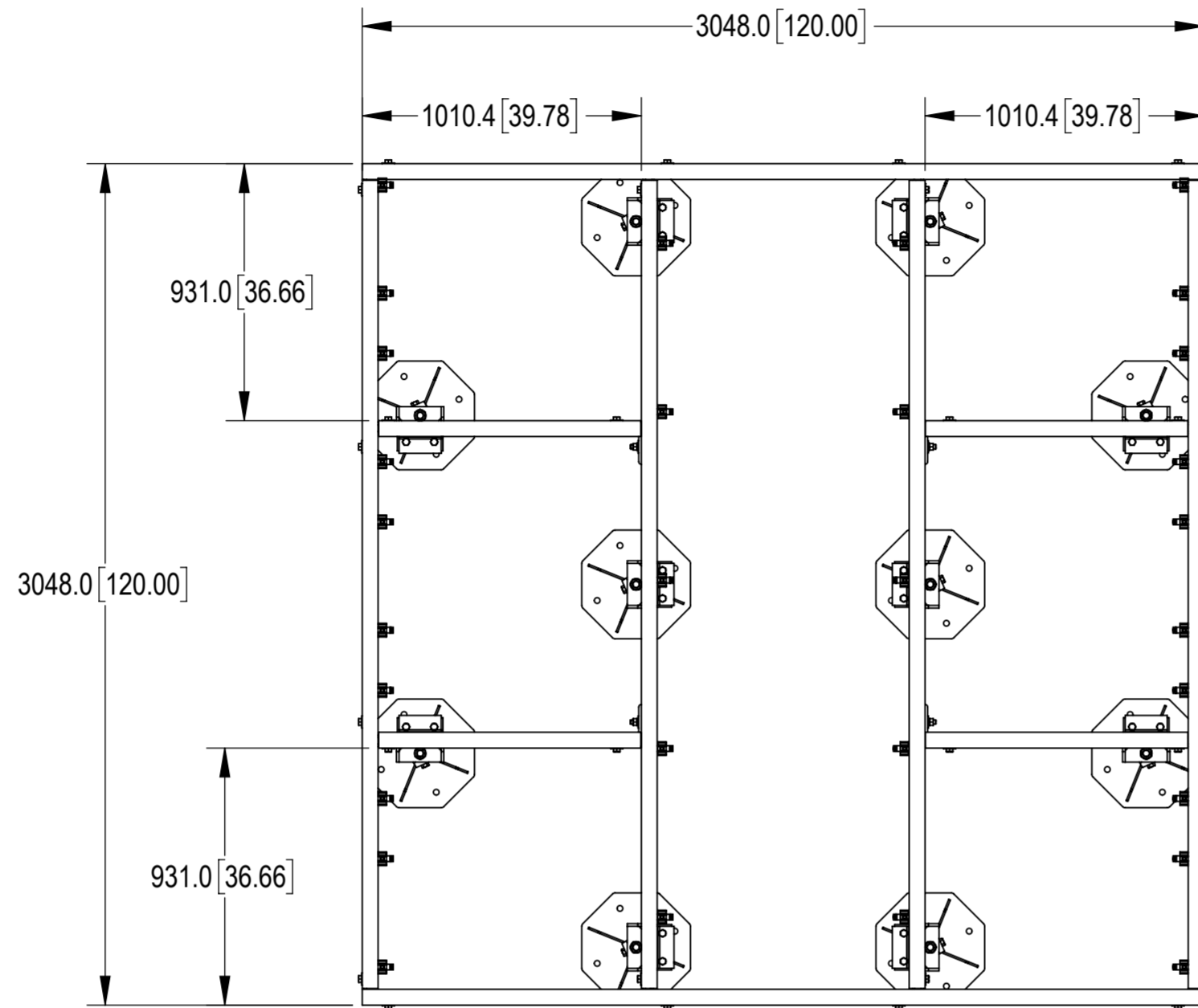
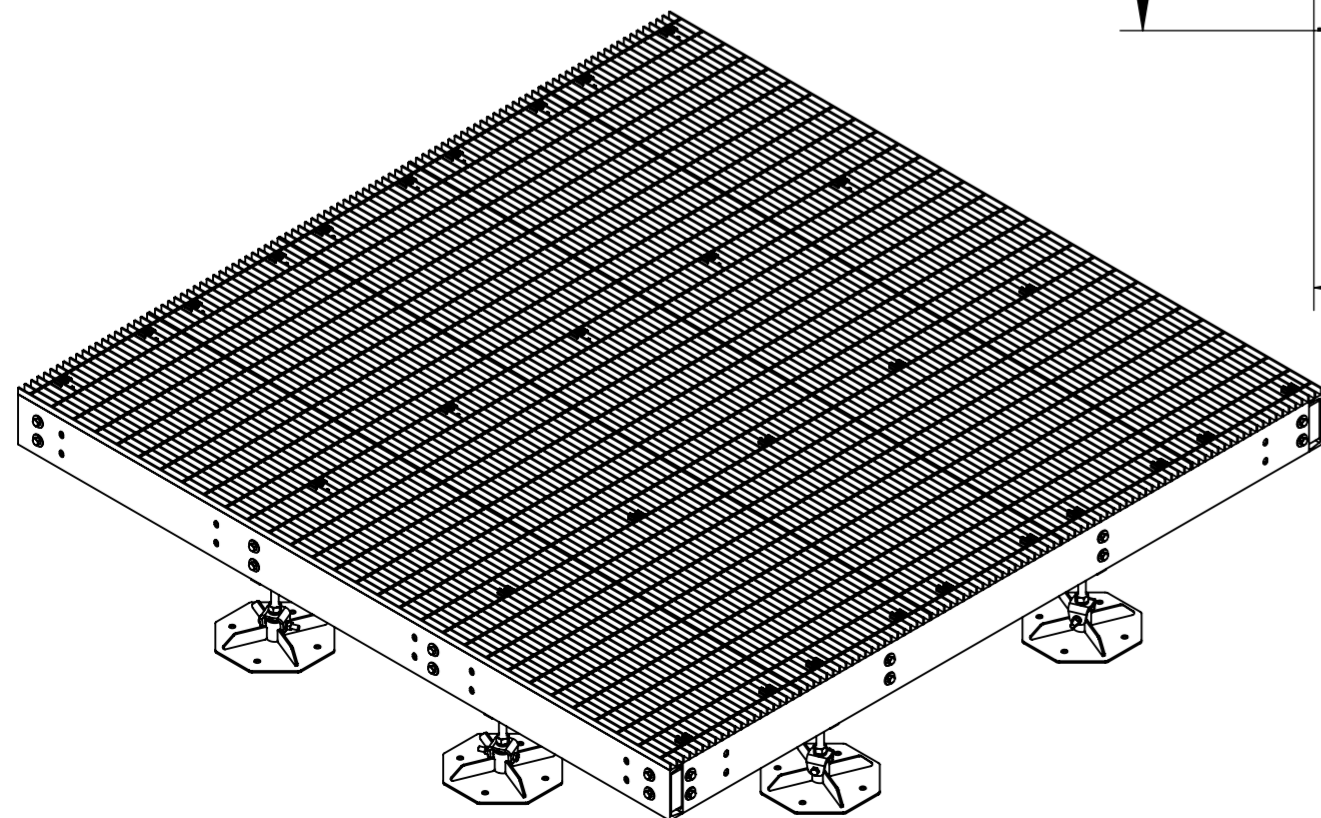
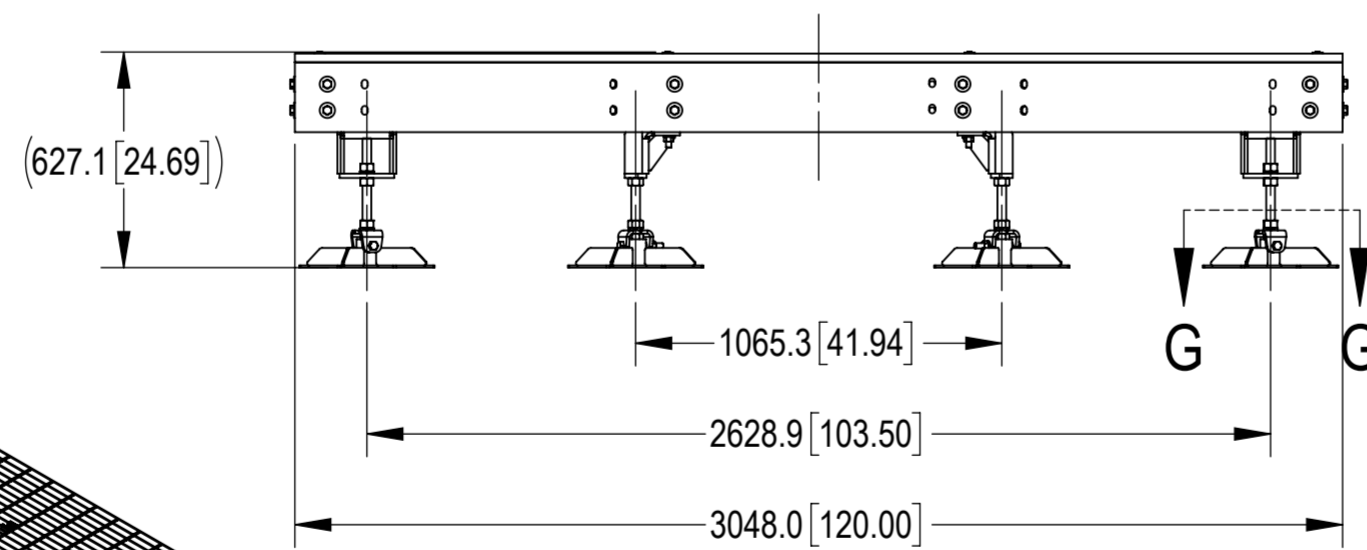
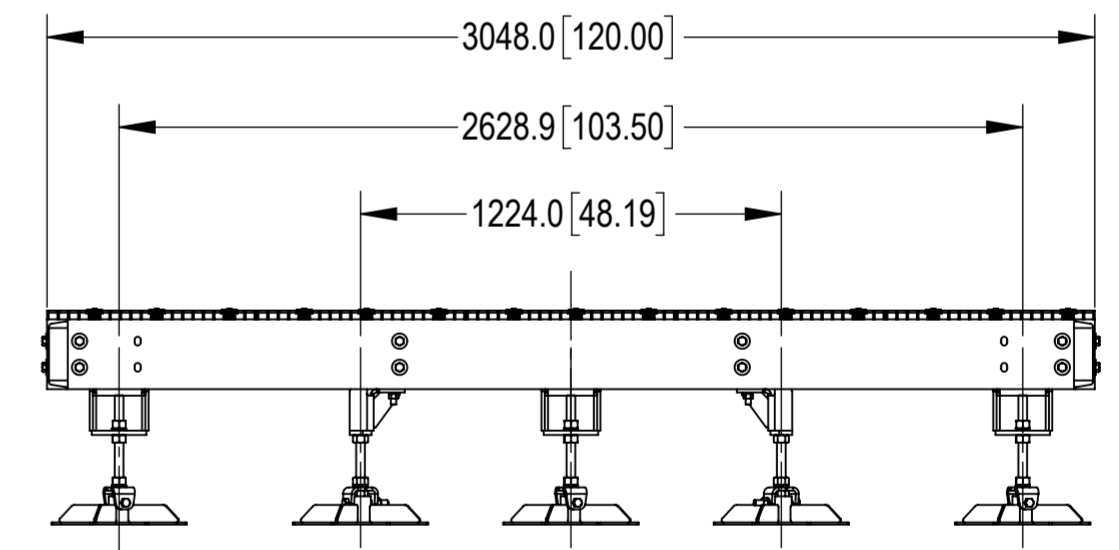


- 1.0 GENERAL NOTES
 1.1 ALL IMPERIAL DIMENSIONS ARE IN BRACKETS [X.XX]
 1.2 FOR PATENT INFO: <https://www.cs-pat.com>
 2.0 DESIGN NOTES
 3.0 MANUFACTURING/SPECIAL REQUIREMENTS
 3.1 TIGHTEN ALL BOLTS SECURING FLAT PLATES BY THE TURN-OF-NUT METHOD. TIGHTEN ALL U-BOLTS USING TURN-OF-NUT METHOD WITH ATTENTION TO LEAVE EQUAL DISTANCE AND EQUAL FORCE ON EACH LEG OF THE U-BOLT.
 4.0 TEST
 5.0 PACKAGING
 5.1 PACKAGING SHALL MEET COMMSCOPE REQUIREMENTS PER DOCUMENT IS-PL-3005
 5.2 PRINTED DOCUMENT TO BE PLACED INSIDE POLYBAG AND THEN IN SHIPPING CONTAINER
 5.3 EXTRA HARDWARE MAYBE SUPPLIED, BAGGED AND SHIPPED

REVISIONS			
REV.	DESCRIPTION	DATE	APPROVED
A	INITIAL RELEASE	YX1027 29SEP22	MM1298 40157568CMO
B	ADDED DIMS @ DRAWING VIEW4	YX10227 21NOV22	MM1298 40161329CMO
C	UPDATED DESCRIPTION	YX1027 06DEC22	MM1298 40161329CMO



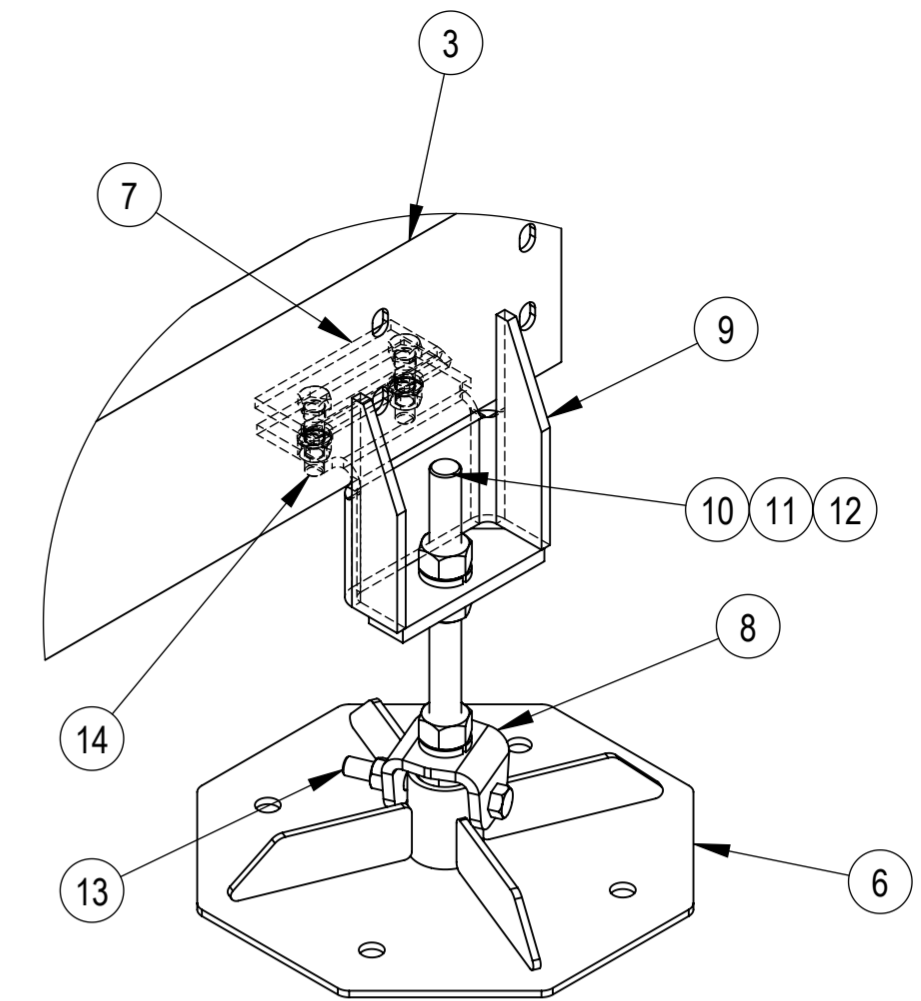
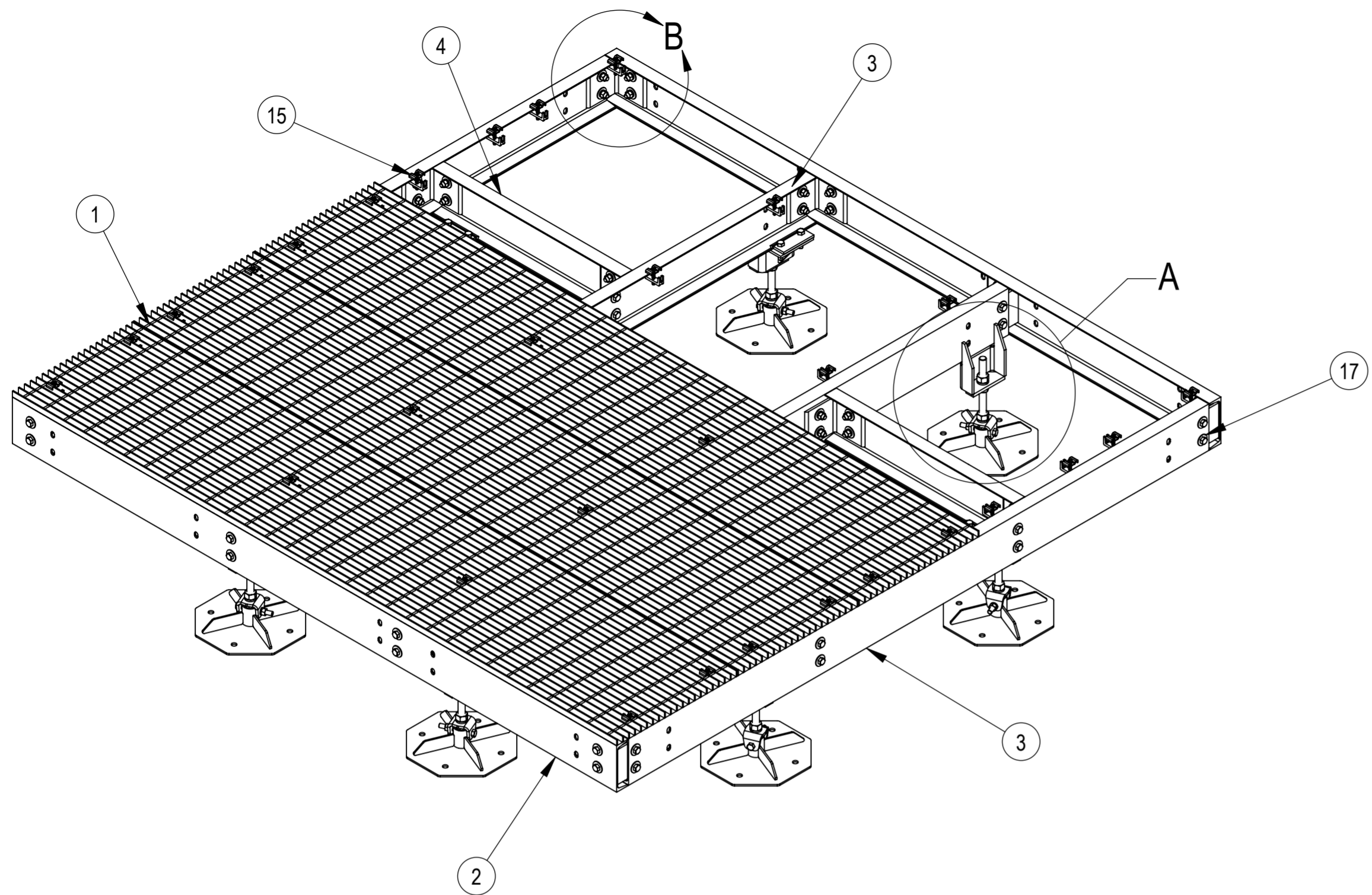
SECTION G-G
SCALE 1 : 10



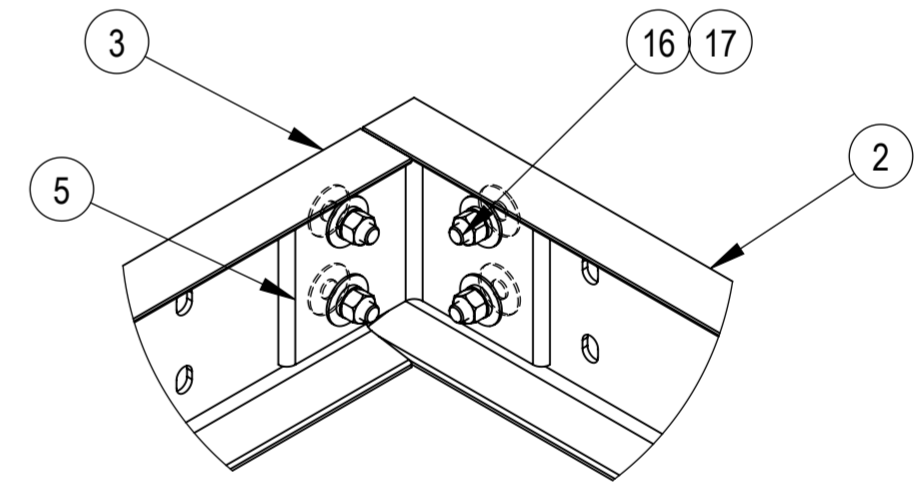
COMMSCOPE, INC. OF NORTH CAROLINA

TOLERANCES		SAP MATERIAL MASTER															
0 PLACE X[.X] ± 6[0.25]	2 PLACE .XX[.XXX] ± 1.50[0.06]	EQ-P1010-DF-CF															
1 PLACE .X[.XX] ± 3.0[0.12]	ANGLES ± 2°																
FINISH		MATERIAL															
<table border="1"> <thead> <tr> <th>NAME</th> <th>DATE</th> <th>TITLE</th> </tr> </thead> <tbody> <tr> <td>CE YX1027</td> <td>27SEP22</td> <td rowspan="5">10'X10' EQ. PLATFORMW/10 DF FEET,CF</td> </tr> <tr> <td>RW YX1027</td> <td>12/05/2022</td> </tr> <tr> <td>AD MM1298</td> <td>12/06/2022</td> </tr> <tr> <td>RE YX1027</td> <td>12/06/2022</td> </tr> <tr> <td>ECN 40161329CMO</td> <td></td> </tr> </tbody> </table>		NAME	DATE	TITLE	CE YX1027	27SEP22	10'X10' EQ. PLATFORMW/10 DF FEET,CF	RW YX1027	12/05/2022	AD MM1298	12/06/2022	RE YX1027	12/06/2022	ECN 40161329CMO		SCALE 1:20 DOCUMENT NO. EQ-P1010-DF-CF	
NAME	DATE	TITLE															
CE YX1027	27SEP22	10'X10' EQ. PLATFORMW/10 DF FEET,CF															
RW YX1027	12/05/2022																
AD MM1298	12/06/2022																
RE YX1027	12/06/2022																
ECN 40161329CMO																	
SIZE A2	Auth Group INSL	MODEL	DRAWING														
VERSION 00	STATUS RE	REVISION A	VERSION 02														
			STATUS RE														
			REVISION C														
			SHEET 1 OF 2														

DENSITY	2044.06	lbs/in ³
MASS	7263.76	lbs
VOLUME	67266.7	in ³
SURFACE AREA		in ²
DENSITY	929118.54	g/mm ³
MASS	119038979.07	grams
VOLUME	43397853.61	mm ³
SURFACE AREA		mm ²
HEIGHT	627.1[24.69]	
LENGTH	3075.4[121.08]	
WIDTH	3075.4[121.08]	





DETAIL A
SCALE 1 : 6



DETAIL B
SCALE 1 : 6

COMPONENT PART NUMBERS PROVIDED FOR ASSEMBLY PURPOSES;
INDIVIDUAL COMPONENTS MAY BE SHIPPED AS PARTS WITHIN AN INCLUDED KIT

ITEM NO.	PART NUMBER	DESCRIPTION	QTY.	WEIGHT
1	MTC7902081001	24" X 120" BAR GRATING	5	141.45 LBS
2	MTC7902101001	10' SIDE CHANNEL	2	113.50 LBS
3	MTC7902101002	10' CENTER CHANNEL	4	109.20 LBS
4	EQ-P1010-1000-00	CHANNEL, EQUIPMENT PLATFORM	4	35.6 LBS
5	MTC790203	CHANNEL ADAPTER ANGLE	16	7.07 LBS
6	MTC3738DF01	BASE FOOT	10	17.92 LBS
7	MTC7902AL07	PINCH PLATE	10	1.60 LBS
8	EQPDF30	CLIP, PIVOT	10	1.67 LBS
9	EQPDF25	WELDMENT, ADJUSTABLE FOOT - DF STYLE	10	10.96 LBS
10	EQPDF29	1-8 X 12" THREADED ROD - B7	10	2.65 LBS
11	GN-08	1" GALV HEX NUT	40	0.33 LBS
12	GWL-08	1" GALV LOCK WASHER	20	0.09 LBS
13	GB-05505	5/8" X 5" GALV BOLT KIT	10	0.52 LBS
14	GB-05245	5/8" X 2-1/2" GALV BOLT KIT	20	0.30 LBS
15	GCM03	GRATING CLIP	30	0.44 LBS
16	GB-05205	5/8" X 2" GALV BOLT KIT	64	0.26 LBS
17	GWF-05	5/8" GALV FLAT WASHER, 1.70D	128	0.06 LBS

COMMSCOPE, INC. OF NORTH CAROLINA				
TITLE 10'X10' EQ. PLATFORMW/10 DF FEET,CF				
				
SIZE A2	SCALE 1:20	DOCUMENT NO. EQ-P1010-DF-CF		
		DRAWING		SHEET 2 OF 2
		VERSION 02	STATUS RE	