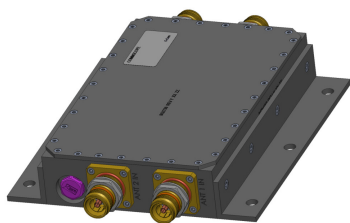


# 7845793-00 | Filter TDD 3500



Passband filter for TDD 3500

## Product Classification

<b>Product Type</b>	Filter
<b>Product Brand</b>	ERA®

## General Specifications

<b>Color</b>	White (RAL 9010)
<b>RF Connector Interface</b>	4.3-10 Female
<b>RF Inputs, quantity</b>	2
<b>RF Outputs, quantity</b>	2

## Dimensions

<b>Height</b>	42 mm   1.654 in
<b>Width</b>	130 mm   5.118 in
<b>Depth</b>	203.5 mm   8.012 in

## Electrical Specifications

<b>Input Power, maximum, specific</b>	5 W CW   50 W Peak
<b>Insertion Loss at Operating Frequency, maximum</b>	1.0 dB @ 3450–3800 MHz   1.3 dB @ 3420–3450 MHz   2.6 dB @ 3410–3420 MHz
<b>Return Loss, minimum</b>	18 dB
<b>Band Rejection at Operating Frequency, minimum</b>	43 dB @ 3000–3400 MHz
<b>Impedance</b>	50 ohm
<b>Operating Frequency Band</b>	3410 – 3800 MHz

## Environmental Specifications

<b>Operating Temperature</b>	-33 °C to +50 °C (-27.4 °F to +122 °F)
<b>Ingress Protection Test Method</b>	IEC 60529:2001, IP68

# 7845793-00 | Filter TDD 3500

---

## Packaging and Weights

**Weight, net** 3 kg | 6.614 lb

## Regulatory Compliance/Certifications

Agency	Classification
CHINA-ROHS	Below maximum concentration value
ROHS	Compliant/Exempted
UK-ROHS	Compliant/Exempted

