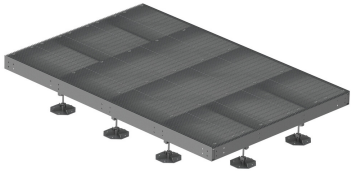


# EQ-P1015-DF-CF

---



Concealed Foot Equipment Platform, 10 ft x 15 ft, base with thirteen displacement legs

## Product Classification

**Product Type** Equipment platform system

## General Specifications

**Legs, quantity** 13

## Dimensions

**Height** 627.126 mm | 24.69 in

**Width** 3048 mm | 120 in

**Length** 4572 mm | 180 in

## Material Specifications

**Material Type** Hot dip galvanized steel

## Mechanical Specifications

**Load Capacity** Up to 10,000 lb (4536 kg) loading

## Packaging and Weights

**Included** Frame | Grating | Hardware | Legs

**Packaging quantity** 1

**Weight, net** 1,271.7 kg | 2,803.615 lb

## Regulatory Compliance/Certifications

Agency	Classification
CHINA-ROHS	Above maximum concentration value
ROHS	Compliant/Exempted
UK-ROHS	Compliant



