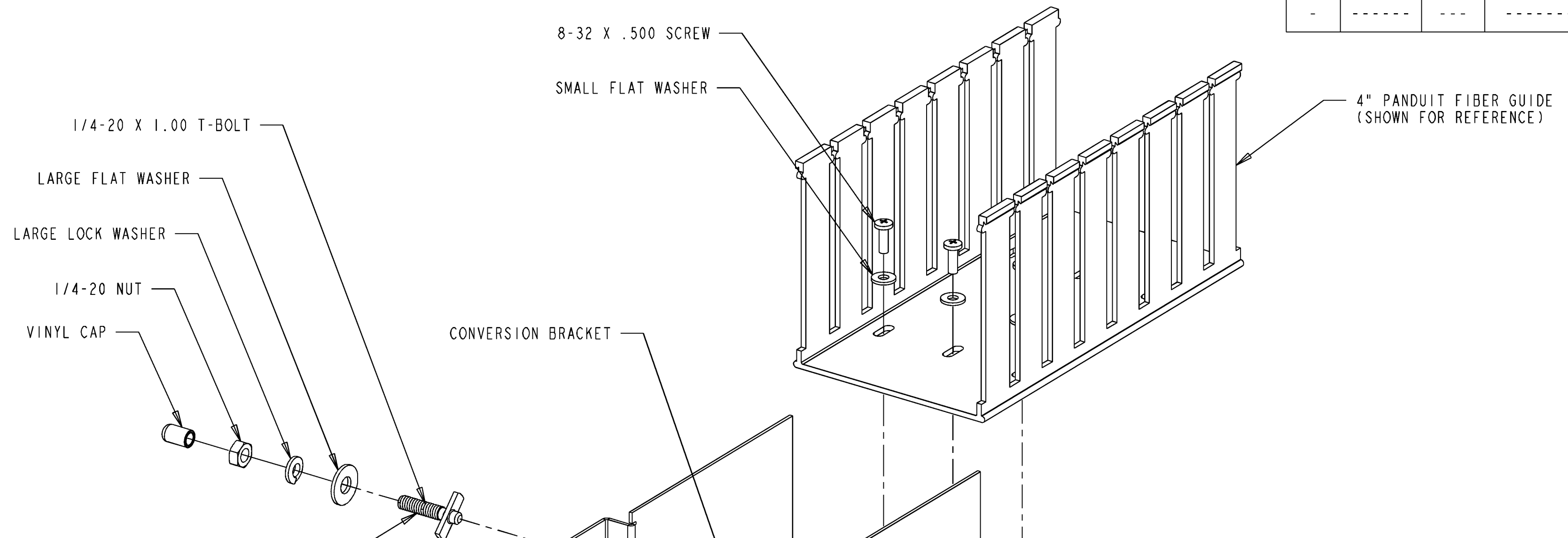


REV	ECO	DWN	DATE
A	20018537	VJL	11/20/98
-	-----	---	-----



THE T-BOLT IS DESIGNED TO FIT THROUGH THE SLOT IN THE CONVERSION BRACKET AND INTO THE CHANNEL ON THE SIDE OF THE ADC FIBER GUIDE. WHEN THE T-BOLT IS IN THE CHANNEL OF THE FIBER GUIDE TURN IT CLOCKWISE AND TIGHTEN THE NUT.

4" ADC FIBER GUIDE (SHOWN FOR REFERENCE)

SMALL FLAT WASHER  
SMALL LOCK WASHER  
8-32 NUT

NOTES:

I. THIS CONVERSION KIT INCLUDES THE FOLLOWING:

- CONVERSION BRACKET (1)
- 1/4-20 X 1.00 T-BOLT (4)
- LARGE FLAT WASHER (4)
- LARGE SPLIT LOCK WASHER (4)
- 1/4-20 NUT (4)
- VINYL CAP (4)
- 8-32 X .500 SCREW (3)
- SMALL FLAT WASHER (6)
- SMALL LOCK WASHER (3)
- 8-32 NUT (3)

THE ADC FIBER GUIDE IS TO BE PLACED INSIDE OF THE SLOTTED TABS ON THE CONVERSION BRACKET. YOU WILL HAVE TO GENTLY SQUEEZE THE TOP OF THE FIBER GUIDE TO FIT IT INTO THE BRACKET.



INFORMATION ON THIS DOCUMENT IS PROPRIETARY TO ADC AND SHALL NOT BE USED, COPIED, REPRODUCED OR DISCLOSED IN WHOLE OR IN PART WITHOUT WRITTEN CONSENT OF ADC.  
TOLERANCE UNLESS OTHERWISE SPECIFIED: .XX: ±.02  
XXX: ±.010  
ANGULAR: ±2°

TITLE: CONVERSION BRACKET KIT INSTALLATION DRAWING  
DRAWING NUMBER: 1041769

DO NOT SCALE DRAWING  
ENGR: PAUL LANCE  
DWN: VERN LOCH  
SHT. 1 OF 1