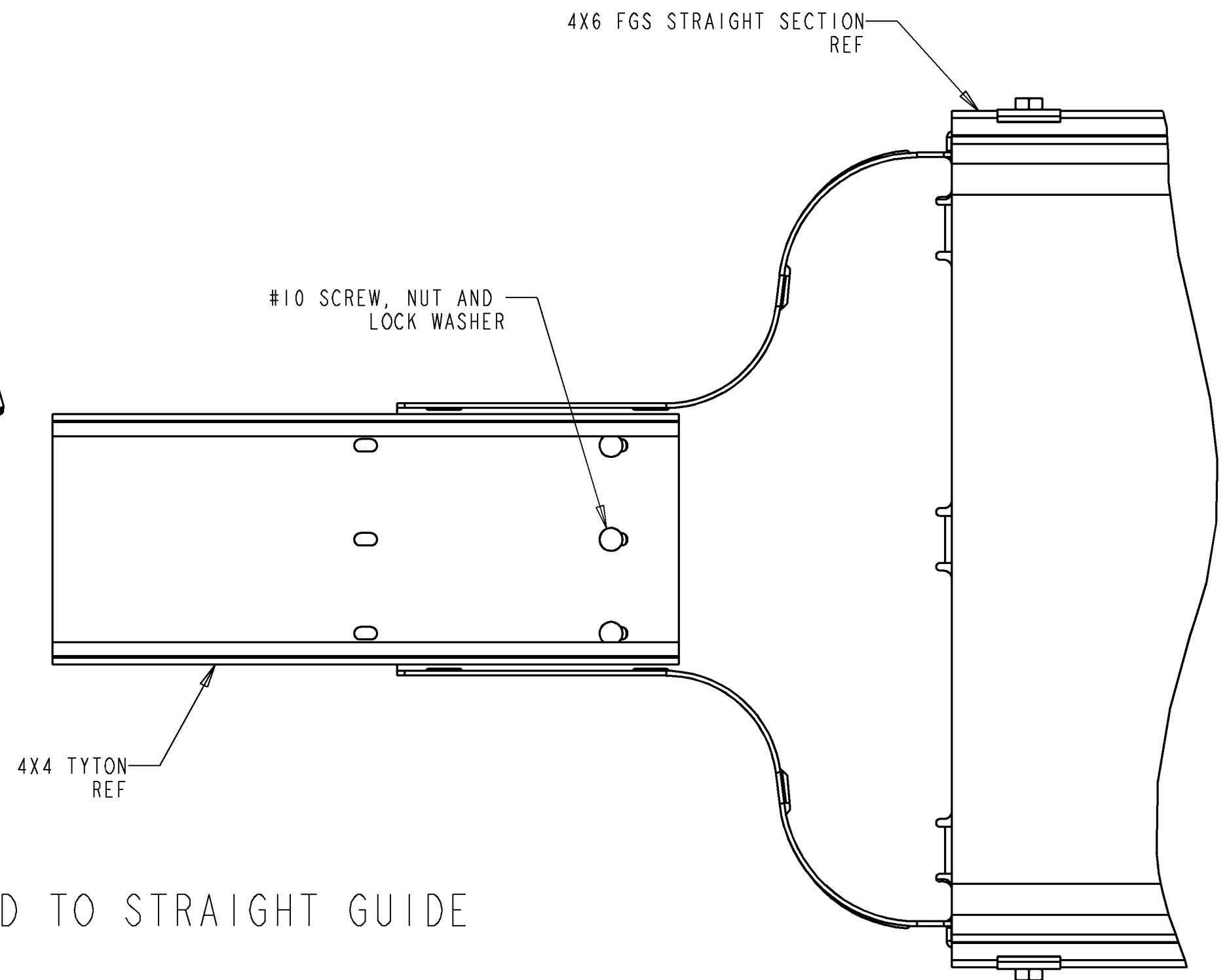
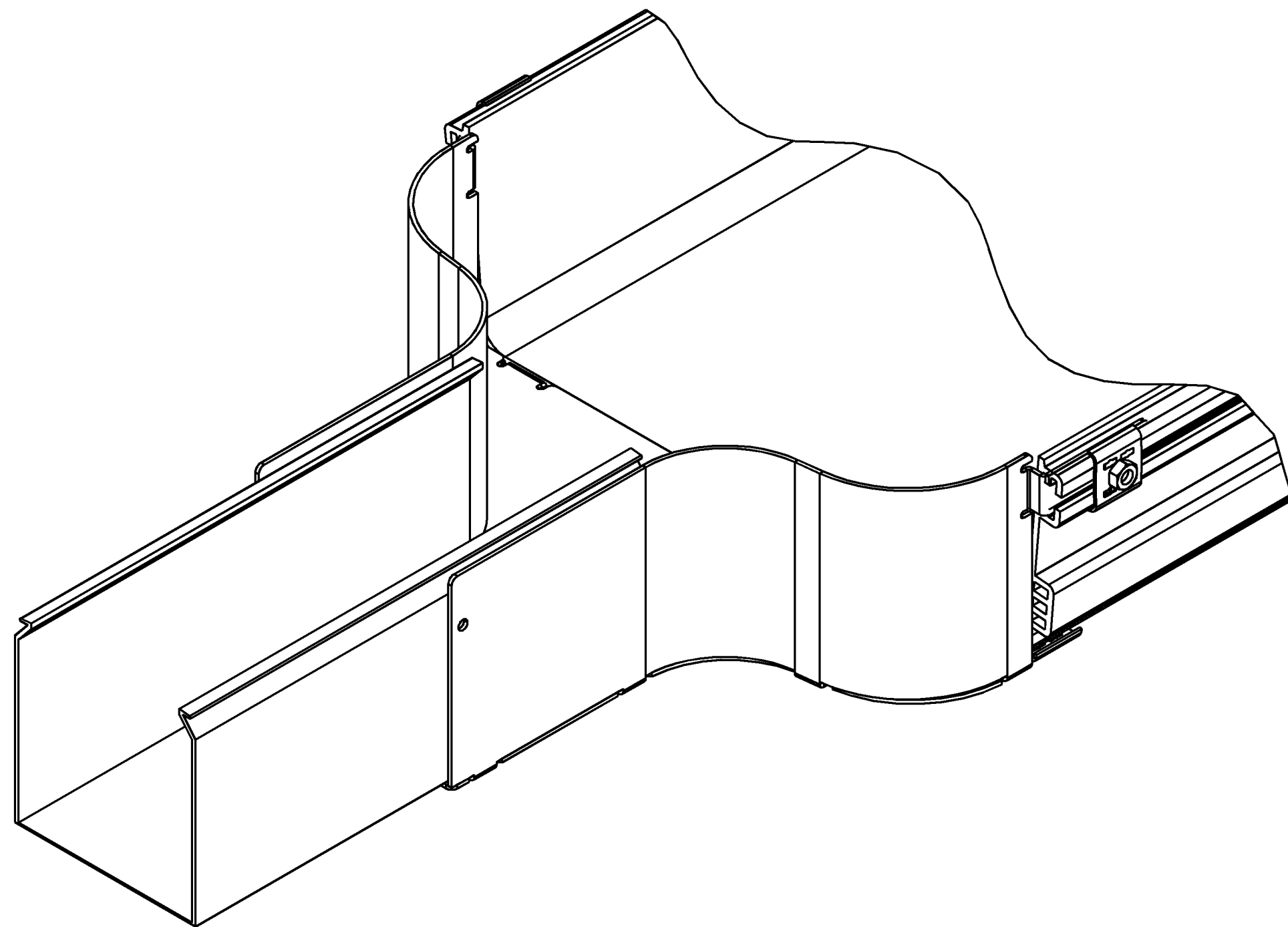


REV	ECO	DWN	DATE
A	20073712	CDZ	10-NOV-00
-	-----	---	-----



VIEW SHOWING ADAPTER ATTACHED TO STRAIGHT GUIDE

NOTES:

1. KIT INCLUDES THE FOLLOWING:

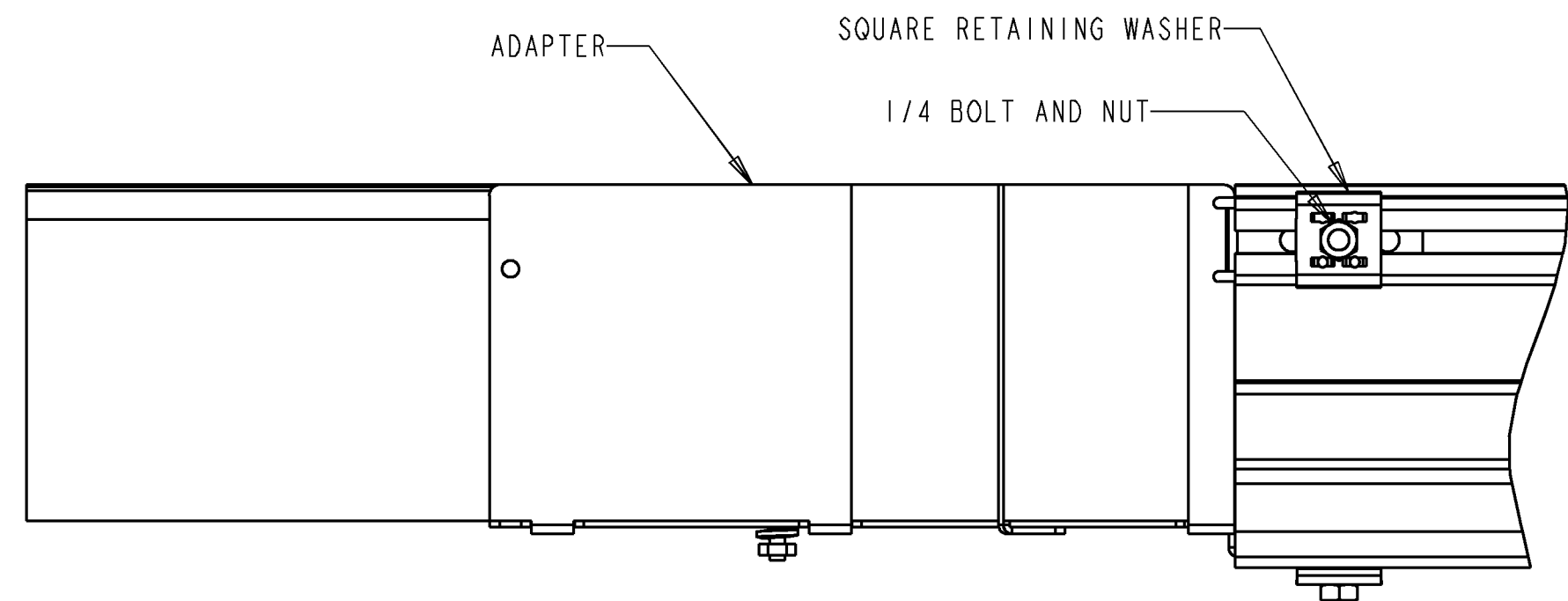
- (1) ADAPTER, 12"FGS TO 4"TYTON
- (5) 1/4-20 HEX HEAD BOLT
- (5) 1/4-20 HEX NUT
- (5) 1/4 FLAT WASHER
- (5) 1/4 SPLITLOCK WASHER
- (5) SQUARE RETAINING WASHER
- (3) #10-32 PAN HEAD SCREW
- (3) #10-32 HEX NUT
- (3) #10 SPLITLOCK WASHER

ATTACHING THE ADAPTER TO THE TYTON STRAIGHT SECTION:

2. PLACE THE TYTON STRAIGHT SECTION INSIDE THE ADAPTER AS SHOWN, ALIGNING THE SLOTS IN THE BOTTOM OF THE STRAIGHT SECTION WITH THE SLOTS IN THE BOTTOM OF THE ADAPTER.
3. INSERT (3) #10-32 PAN HEAD SCREWS INTO THE SLOTS IN THE TYTON STRAIGHT SECTION, THROUGH THE SLOTS IN THE ADAPTER. ASSEMBLE (3) #10 SPLITLOCK WASHERS AND (3) #10 HEX NUTS TO THE SCREWS, AND TIGHTEN COMPLETELY.

ATTACHING THE ADAPTER TO FIBERGUIDE STRAIGHT SECTION:

4. INSERT (5) 1/4-20 HEX HEAD BOLT INTO THE CENTER HOLE IN EACH OF THE TABS ON THE ADAPTER. ENSURE THAT BOLT HEADS ARE ON THE INSIDE OF THE TABS.
5. INSERT TABS WITH SCREWS INTO THE OUTER T-CHANNEL ON THE FGS STRAIGHT SECTION. ENSURE TABS ARE FULLY INSERTED INTO T-CHANNEL.
6. ASSEMBLE (5) SQUARE RETAINING WASHERS AND (5) 1/4-20 HEX NUTS ONTO (5) 1/4-20 HEX HEAD CAP SCREWS INSERTED IN THE TABS. TIGHTEN ALL HARDWARE COMPLETELY.

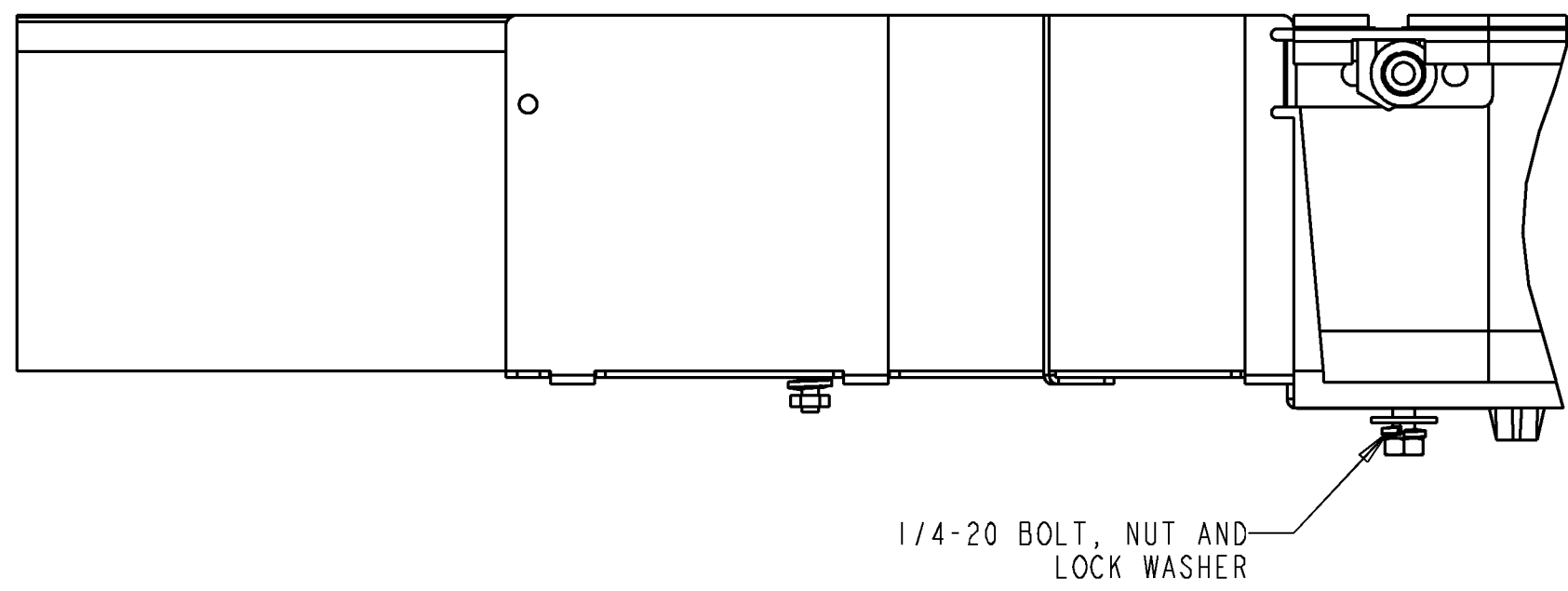
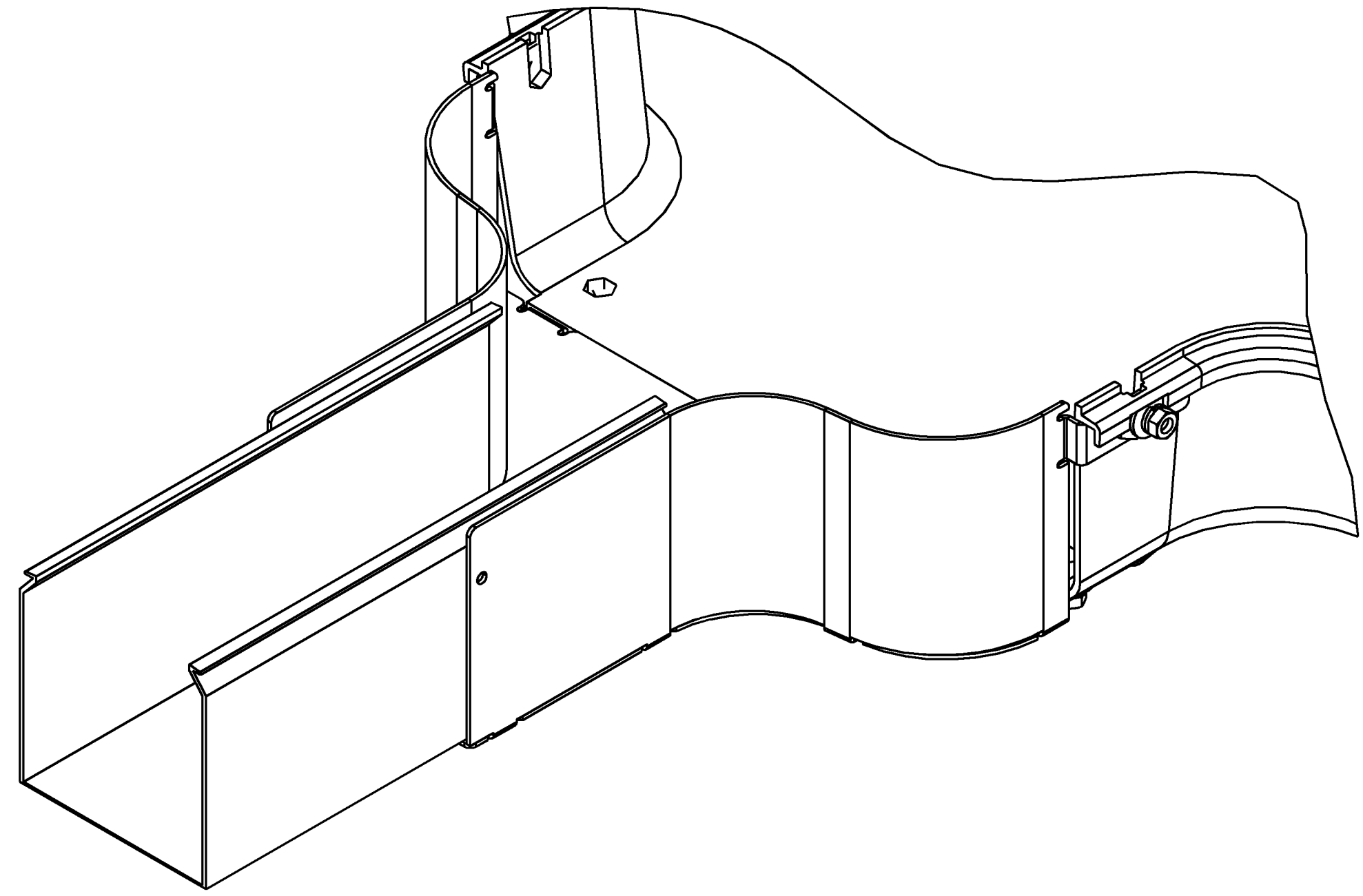
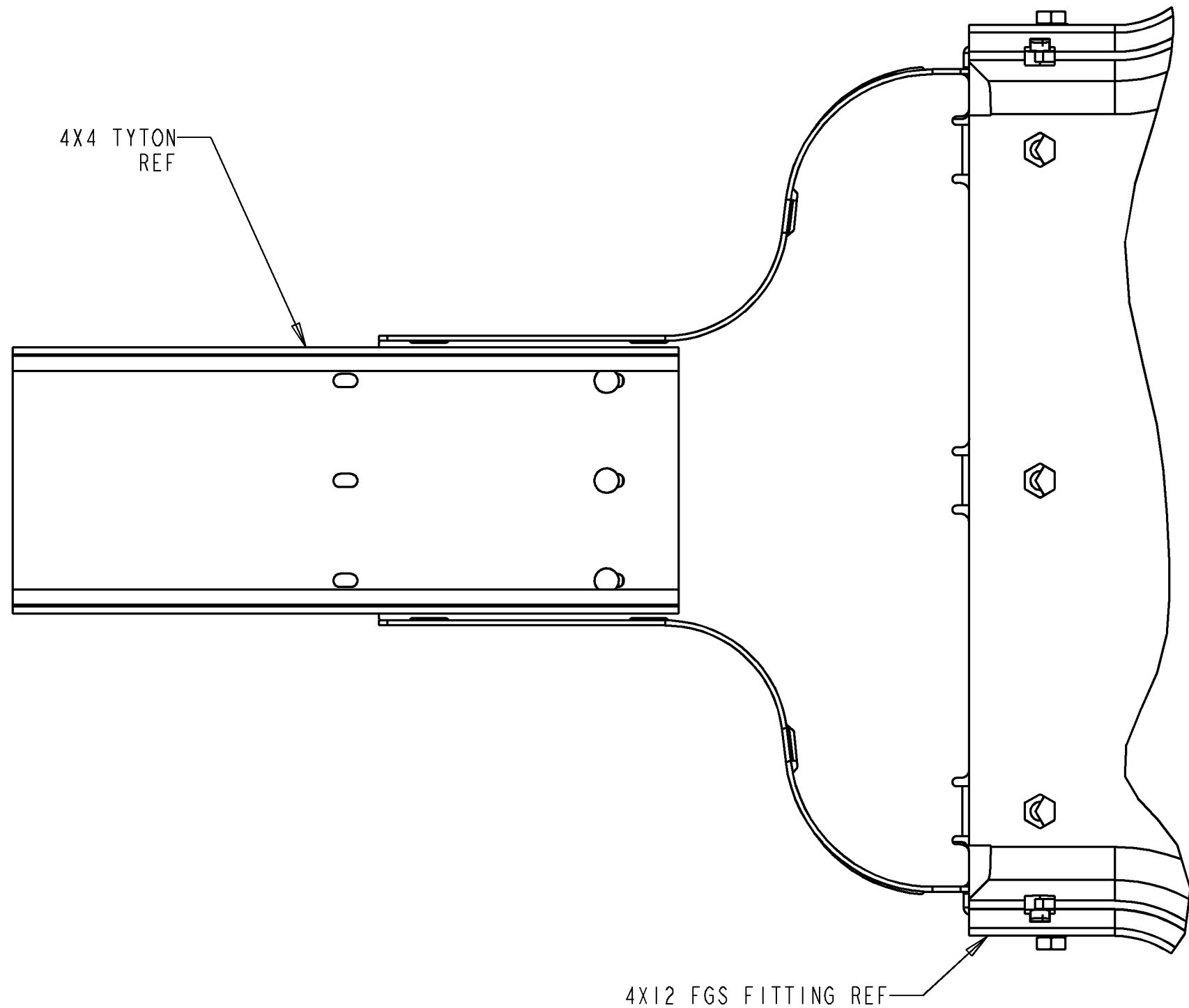


CATALOG #: FGS-ACC122



INFORMATION ON THIS DOCUMENT IS PROPRIETARY TO ADC AND SHALL NOT BE USED, COPIED, REPRODUCED OR DISCLOSED IN WHOLE OR IN PART WITHOUT WRITTEN CONSENT OF ADC.		TITLE 12" FGS TO 4" TYTON ADAPTER, INSTL DRW	
TOLERANCE UNLESS OTHERWISE SPECIFIED	.XX: ±.02 .XXX: ±.010 ANGULAR: ±2°	C SIZE	DRAWING NUMBER 1140857
THIRD ANGLE PROJECTION	DO NOT SCALE DRAWING	ENGR: KEVIN HRUBY DWN: CRAIG ZELASKO	A REV SHT. 1 OF 2

REV	ECO	DWN	DATE



VIEW SHOWING ADAPTER ATTACHED TO FITTING

ATTACHING THE ADAPTER TO FIBERGUIDE FITTING:

7. ASSEMBLE THE ADAPTER TO THE FIBERGUIDE FITTING, AS SHOWN. ENSURE ADAPTER IS FLUSH WITH FITTING, AND CENTER HOLES IN ADAPTER TABS ARE ALIGNED WITH HOLES IN FITTING.
8. INSERT (5) 1/4-20 HEX HEAD BOLTS INTO SOCKET HOLES IN FITTING, WITH BOLT THREADS PROTRUDING THROUGH CENTER HOLE IN ADAPTER TAB.
9. ASSEMBLE (5) 1/4 FLAT WASHER, THEN (5) 1/4 SPLITLOCK WASHER ONTO BOLT THREADS. ASSEMBLE 1/4-20 HEX NUTS ONTO THREADS, AND TIGHTEN COMPLETELY.



INFORMATION ON THIS DOCUMENT IS PROPRIETARY TO ADC AND SHALL NOT BE USED, COPIED, REPRODUCED OR DISCLOSED IN WHOLE OR IN PART WITHOUT WRITTEN CONSENT OF ADC.		TITLE 12" FGS TO 4" TYTON ADAPTER, INSTL DRW	
TOLERANCE UNLESS OTHERWISE SPECIFIED .XX:±.02 .XXX:±.010 ANGULAR:±2°	C SIZE	DRAWING NUMBER 1140857	A REV
THIRD ANGLE PROJECTION DO NOT SCALE DRAWING	ENGR: KEVIN HRUBY DWN: CRAIG ZELASKO	SHT. 2 OF 2	