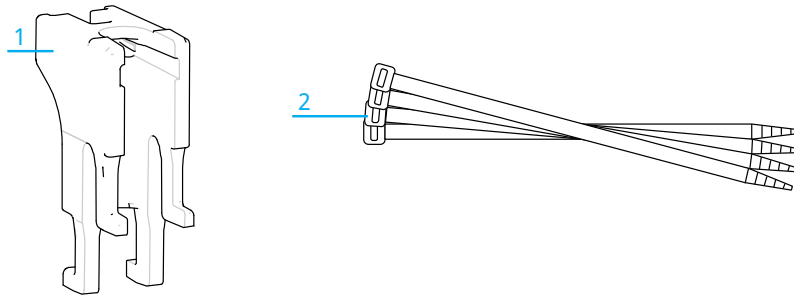


## NOVUX™ Fiber Optic System NVX-CR-EX-NN-CC2: External drop cable guidance bracket

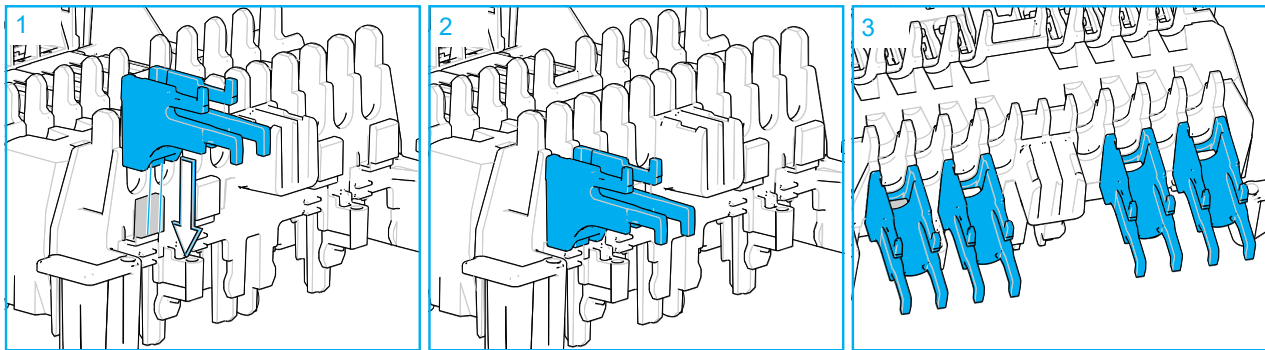
Applicable for CC 150/200

### 1 Kit contents



N°	Description
1	External drop cable guidance bracket
2	Cable ties

### 2 Install external drop cable guidance bracket

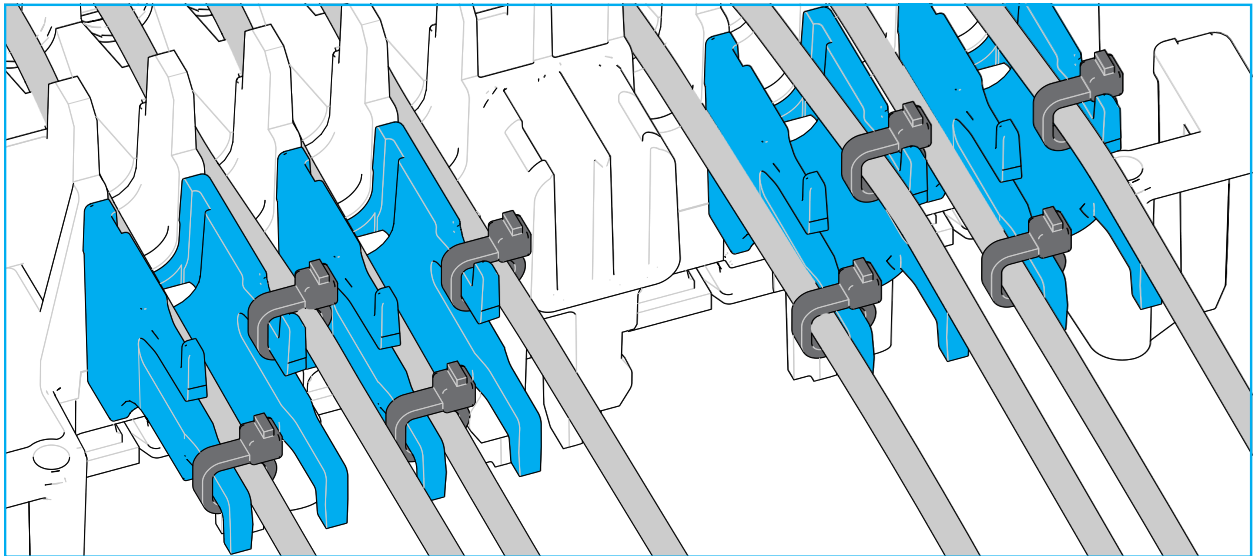


- 1 Front side (drop side) facing forward, slide the external drop cable guidance bracket over the stud.
- 2 The snap feature on the bracket snaps behind the stud.
- 3 4 external drop cable guidance brackets installed.

**Note:** Maximum mountable brackets on the CC 150 organizer is 4. Maximum mountable brackets on the CC 200 organizer is 6.

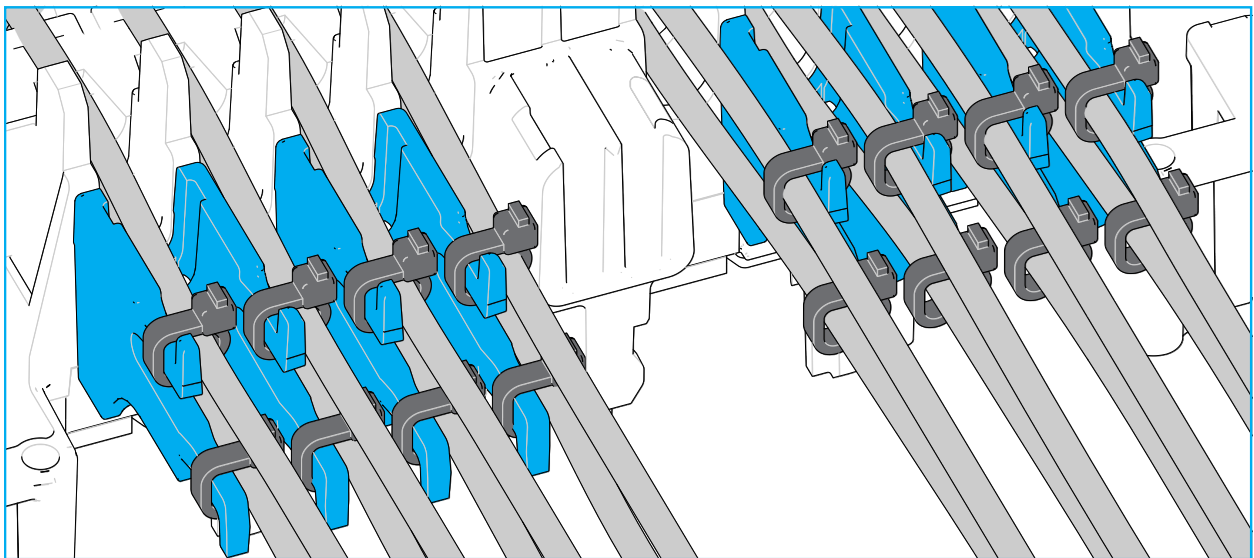
**Note:** Only applicable for drop cables.

### 3 Secure single layer drops



- 1 Guide the cables in the external drop cable guidance bracket and attach with a cable tie as shown.

### 4 Secure dual layer drops



- 1 Guide the cables in the external drop cable guidance bracket and attach with a cable tie as shown.