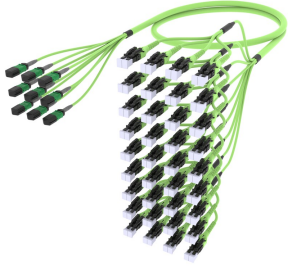


ULVQVLUTK

Base Product



Ultra Low Loss ULL OM5 MPO8 APC non-pinned to LC/UPC Uniboot Ruggedized fanout Cable, 72-Fiber, Plenum, 8 fiber PmP 2.0 mm

Product Classification

Regional Availability	Asia Australia/New Zealand China Europe India Latin America Middle East/Africa North America
Portfolio	CommScope®
Product Type	Ruggedized fanout
Product Brand	Propel SYSTIMAX ULL
Ordering Note	For additional jacket colors, please contact a CommScope Sales Representative For lengths greater than 999 ft (304 m), orders must be in meters Minimum length may vary based on cable configuration

General Specifications

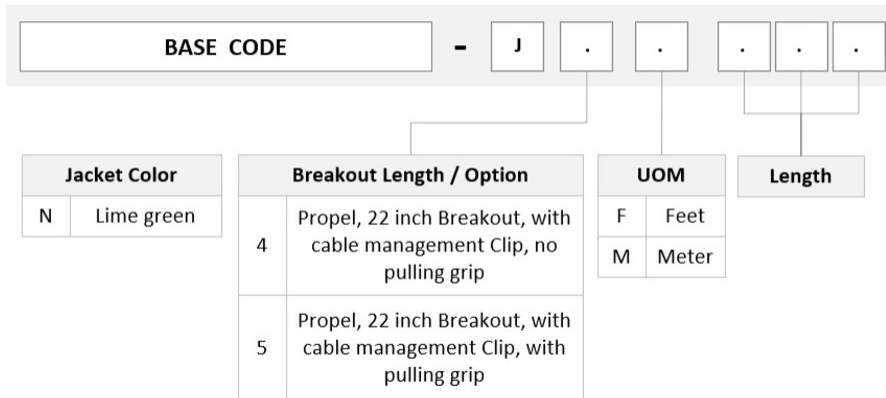
Connector A, quantity	9
Color, boot A	Gray
Color, connector A	Lime green
Connector B, quantity	72
Color, boot B	Lime green
Color, connector B	Black
Construction Type	Stranded
Furcation Color	Lime green
Interface, Connector A	MPO-08/APC Female
Interface, Connector B	LC/UPC
Interface Feature, connector B	Uniboot
Jacket Color	Lime green
Polarity	Method B Enhanced (ULL)
Fibers per Subunit, quantity	8
Total Fibers, quantity	72

ULVQVLUTK

Dimensions

Breakout Length	22 in
Cable Assembly Length Range (m)	3 – 305
Cable Assembly Length Range (ft)	10 – 999

Ordering Tree



Mechanical Specifications

Cable Retention Strength, maximum	11.24 lb @ 0 ° 4.40 lb @ 90 °
--	---------------------------------

Optical Specifications

Fiber Mode	Multimode
Fiber Type	OM5, LazrSPEED®

Environmental Specifications

Operating Temperature	-10 °C to +60 °C (+14 °F to +140 °F)
Environmental Space	Indoor Plenum

Regulatory Compliance/Certifications

Agency	Classification
CHINA-ROHS	Above maximum concentration value
ISO 9001:2015	Designed, manufactured and/or distributed under this quality management system
REACH-SVHC	Compliant as per SVHC revision on www.commscope.com/ProductCompliance
ROHS	Compliant/Exempted

ULVQVLUTK

UK-ROHS

Compliant/Exempted



Included Products

- | | | |
|------------------------------------|---|---|
| 760248194
P-072-MP-5G-F08AQ/20T | - | Fiber indoor cable, LazrSPEED® Plenum MPO Trunk, 72 fiber multi-unit with 8 fiber subunits, Multimode OM5, Gel-free, Feet jacket marking, Aqua jacket color |
| 860658162 | - | 2.0 mm LC Uniboot GEN 1.5, Lime Green |
| 860662232 | - | MPO8,ULL,Multimode,FEMALE,APC,GREEN,2 mm |



Fiber indoor cable, LazrSPEED® Plenum MPO Trunk, 72 fiber multi-unit with 8 fiber subunits, Multimode OM5, Gel-free, Feet jacket marking, Aqua jacket color

Product Classification

Regional Availability	Asia Australia/New Zealand Latin America Middle East /Africa North America
Portfolio	CommScope®
Product Type	Fiber indoor cable
Product Series	P-MP

General Specifications

Cable Type	MPO trunk cable
Construction Type	Non-armored
Subunit Type	Gel-free
Filler, quantity	3
Jacket Color	Aqua
Jacket Marking	Feet
Subunit, quantity	9
Fibers per Subunit, quantity	8
Total Fiber Count	72

Dimensions

Buffer Tube/Subunit Diameter	2 mm 0.079 in
Diameter Over Jacket	11.8 mm 0.465 in

Representative Image



Mechanical Specifications

Minimum Bend Radius, loaded	172 mm 6.772 in
Minimum Bend Radius, unloaded	115 mm 4.528 in
Tensile Load, long term, maximum	200 N 44.962 lbf
Tensile Load, short term, maximum	667 N 149.948 lbf
Compression	10 N/mm 57.101 lb/in
Compression Test Method	FOTP-41 IEC 60794-1 E3
Flex	300 cycles
Flex Test Method	FOTP-104 IEC 60794-1 E6
Impact	0.74 N-m 6.55 in lb
Impact Test Method	FOTP-25 IEC 60794-1 E4
Strain	See long and short term tensile loads
Strain Test Method	FOTP-33 IEC 60794-1 E1
Twist	10 cycles
Twist Test Method	FOTP-85 IEC 60794-1 E7
Vertical Rise, maximum	500 m 1,640.42 ft

Optical Specifications

Fiber Type	OM5, LazrSPEED® wideband
-------------------	--------------------------

Environmental Specifications

Installation temperature	0 °C to +70 °C (+32 °F to +158 °F)
Operating Temperature	0 °C to +70 °C (+32 °F to +158 °F)
Storage Temperature	-40 °C to +70 °C (-40 °F to +158 °F)

760248194 | P-072-MP-5G-F08AQ/20T

Cable Qualification Standards	ANSI/ICEA S-83-596 Telcordia GR-409
Environmental Space	Plenum
Flame Test Listing	NEC OFNP (ETL) and c(ETL)
Flame Test Method	NFPA 130 NFPA 262

Environmental Test Specifications

Heat Age	0 °C to +85 °C (+32 °F to +185 °F)
Heat Age Test Method	IEC 60794-1 F9
Low High Bend	0 °C to +70 °C (+32 °F to +158 °F)
Low High Bend Test Method	FOTP-37 IEC 60794-1 E11
Temperature Cycle	0 °C to +70 °C (+32 °F to +158 °F)
Temperature Cycle Test Method	FOTP-3 IEC 60794-1 F1

Packaging and Weights

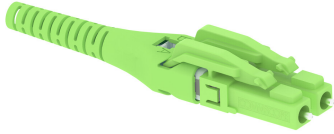
Cable weight	143 kg/km 96.092 lb/kft
---------------------	---------------------------

* Footnotes

Operating Temperature Specification applicable to non-terminated bulk fiber cable

860658162

2.0 mm LC Uniboot GEN 1.5, Lime Green



Product Classification

Regional Availability Asia | Australia/New Zealand | EMEA | Latin America | North America
Product Type Fiber connector boot

General Specifications

Color Lime green

Dimensions

Compatible Cable Diameter 2 mm | 0.079 in

Packaging and Weights

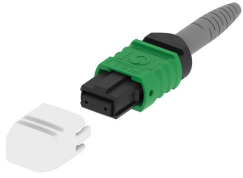
Packaging Type Bag

Regulatory Compliance/Certifications

Agency	Classification
CHINA-ROHS	Below maximum concentration value
REACH-SVHC	Compliant as per SVHC revision on www.commscope.com/ProductCompliance
ROHS	Compliant
UK-ROHS	Compliant



860662232



MPO8,ULL,Multimode,FEMALE,APC,GREEN,2 mm

Product Classification

Regional Availability	Asia Australia/New Zealand EMEA Latin America North America
Portfolio	CommScope®
Product Type	Fiber connector

General Specifications

Color	Green
Color, boot	Black
Ferrule Geometry	Angled
Interface	MPO/APC Female
Interface Feature	Unpinned

Dimensions

Compatible Cable Diameter	2 mm 0.079 in
----------------------------------	-----------------

Optical Specifications

Fiber Mode	Multimode
Fiber Type	OM4 OM5
Insertion Loss Change, mating	0.3 dB
Optical Components Standard	ANSI/TIA-568-C.3
Insertion Loss Change, temperature	0.3 dB
Insertion Loss, maximum	0.2 dB
Return Loss, minimum	45 dB

Packaging and Weights

Packaging quantity	1
---------------------------	---

* Footnotes

860662232

Insertion Loss Change, mating TIA-568: Maximum insertion loss change after 500 matings

Insertion Loss Change, temperature Maximum insertion loss change from -10 °C to +60 °C (+14 °F to +140 °F)