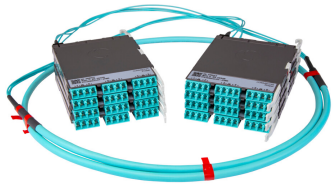


PPLUGXRLCLCL



Propel ULL Multimode OM4 Cabled Module, 6x16 duplex LC Propel module on End A to 6x16 on End B, 96 fiber Plenum Trunk, Method B Enhanced

- This component requires 4 of the 12 lanes on the Propel Panel blade
- Ultra-low loss (ULL) with Method B Enhanced polarity
- End A module can be installed from rear of panel
- Serialized QR code provides easy access to factory optical test results

Product Classification

Regional Availability	Asia Australia/New Zealand EMEA Latin America North America
Portfolio	SYSTIMAX®
Product Type	Fiber cabled module
Product Brand	Propel
Product Series	PPL
Ordering Note	End B module is the same module as End A For lengths greater than 999 ft (304 m), orders must be in meters Maximum length is 400 meters

General Specifications

Configuration Type	PROPEL Module to PROPEL Module
Cable Color	Aqua
Cable Type	Trunk Cable - Plenum
Interface, front	LC/UPC
Interface Feature, front	Duplex Shuttered
Interface Color, front	Aqua
Interface, rear	LC/UPC
Interface Feature, rear	Duplex Shuttered
Interface Color, rear	Aqua
Module Size, end A	16 fiber
Module Size, end B	16 fiber
Module Quantity, end A	6
Module Quantity, end B	6
Polarity	Method B Enhanced (ULL)

PPLUGXRLCLCL

Total Fibers, quantity	96
Total Ports, quantity, front	48
Total Ports, quantity, rear	48

Dimensions

Height	11 mm 0.433 in
Width	131 mm 5.157 in
Depth	170 mm 6.693 in
Breakout Length, end B	23 in
Cable Assembly Length Range (m)	1 – 400
Cable Assembly Length Range (ft)	2 – 999

Ordering Tree



Optical Specifications

Fiber Mode	Multimode
Fiber Type	OM4
Insertion Loss, maximum	0.35 dB

Environmental Specifications

Qualification Standards	IEC 61753-1 TIA-568.3-D
Safety Standard	c-UL-us

Packaging and Weights

Packaging quantity	1
---------------------------	---

Regulatory Compliance/Certifications

PPLUGXRLCLCL

Agency	Classification
CHINA-ROHS	Above maximum concentration value
ROHS	Compliant/Exempted
UK-ROHS	Compliant/Exempted



Included Products

- 760251002 - Fiber indoor cable, LazrSPEED® Plenum MPO Trunk, 96 fiber multi-unit with 16 fiber subunits, P-096-MP-5K-F16AQ Multimode OM4, Gel-free, Feet jacket marking, Aqua jacket color



Fiber indoor cable, LazrSPEED® Plenum MPO Trunk, 96 fiber multi-unit with 16 fiber subunits, Multimode OM4, Gel-free, Feet jacket marking, Aqua jacket color

Product Classification

Regional Availability	Asia Australia/New Zealand Latin America Middle East /Africa North America
Portfolio	CommScope®
Product Type	Fiber indoor cable
Product Series	P-MP

General Specifications

Cable Type	MPO trunk cable
Construction Type	Non-armored
Subunit Type	Gel-free
Jacket Color	Aqua
Jacket Marking	Feet
Subunit, quantity	6
Fibers per Subunit, quantity	16
Total Fiber Count	96

Dimensions

Buffer Tube/Subunit Diameter	3 mm 0.118 in
Diameter Over Jacket	10.7 mm 0.421 in

Mechanical Specifications

Minimum Bend Radius, loaded	161 mm 6.339 in
Minimum Bend Radius, unloaded	107 mm 4.213 in
Tensile Load, long term, maximum	400 N 89.924 lbf
Tensile Load, short term, maximum	1335 N 300.12 lbf

760251002 | P-096-MP-5K-F16AQ

Compression	10 N/mm 57.101 lb/in
Compression Test Method	FOTP-41 IEC 60794-1 E3
Flex	300 cycles
Flex Test Method	FOTP-104 IEC 60794-1 E6
Impact	0.74 N-m 6.55 in lb
Impact Test Method	FOTP-25 IEC 60794-1 E4
Strain	See long and short term tensile loads
Strain Test Method	FOTP-33 IEC 60794-1 E1
Twist	10 cycles
Twist Test Method	FOTP-85 IEC 60794-1 E7
Vertical Rise, maximum	368 m 1,207.349 ft

Optical Specifications

Fiber Type	OM4, LazrSPEED® 550 OM4, LazrSPEED® 550
-------------------	---

Environmental Specifications

Installation temperature	0 °C to +70 °C (+32 °F to +158 °F)
Operating Temperature	0 °C to +70 °C (+32 °F to +158 °F)
Storage Temperature	-40 °C to +70 °C (-40 °F to +158 °F)
Cable Qualification Standards	ANSI/ICEA S-83-596 Telcordia GR-409
Environmental Space	Plenum
Flame Test Listing	NEC OFNP (ETL) and c(ETL)
Flame Test Method	NFPA 130 NFPA 262

Environmental Test Specifications

Heat Age	0 °C to +85 °C (+32 °F to +185 °F)
Heat Age Test Method	IEC 60794-1 F9
Low High Bend	0 °C to +70 °C (+32 °F to +158 °F)
Low High Bend Test Method	FOTP-37 IEC 60794-1 E11
Temperature Cycle	0 °C to +70 °C (+32 °F to +158 °F)
Temperature Cycle Test Method	FOTP-3 IEC 60794-1 F1

Packaging and Weights

760251002 | P-096-MP-5K-F16AQ

Cable weight

113 kg/km | 75.932 lb/kft

* Footnotes

Operating Temperature Specification applicable to non-terminated bulk fiber cable