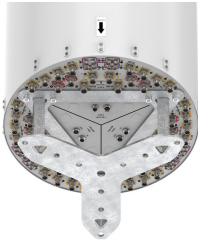


3X-RRZZV4S4-65DR27



72- ports tri-sector antenna, 12x 694-960, 12x 1427-2690, 24x 1695-2690 MHz, 65° HPBW, and 24x 3300-3800 MHz, 90° HPBW, 27x RET

- Separated Extension KIT available for this antenna, check Optional Mounting Kits section
- No pole mounting kit for this antenna

General Specifications

Antenna Type	DualPol® tri-sector
Band	Multiband
Calibration Connector Interface	M-LOC
Calibration Connector Quantity	3
Color	Light Gray (RAL 7035)
Performance Note	Outdoor usage
Radome Material	Fiberglass, UV resistant
RF Connector Interface	4.3-10 Female M-LOC
RF Connector Location	Bottom
RF Connector Quantity, high band	24
RF Connector Quantity, mid band	36
RF Connector Quantity, low band	12
RF Connector Quantity, total	72

Remote Electrical Tilt (RET) Information

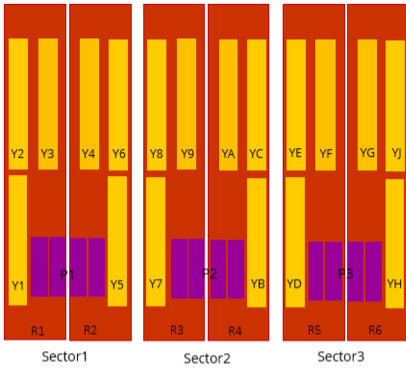
RET Hardware	CommRET v2
RET Interface, quantity	3 female 3 male
Internal RET	High band (3) Low band (6) Mid band (18)
Protocol	3GPP/AISG 2.0

Dimensions

Length	2769 mm 109.016 in
Net Weight, antenna only	138.5 kg 305.34 lb
Outer Diameter	580 mm 22.835 in

Array Layout

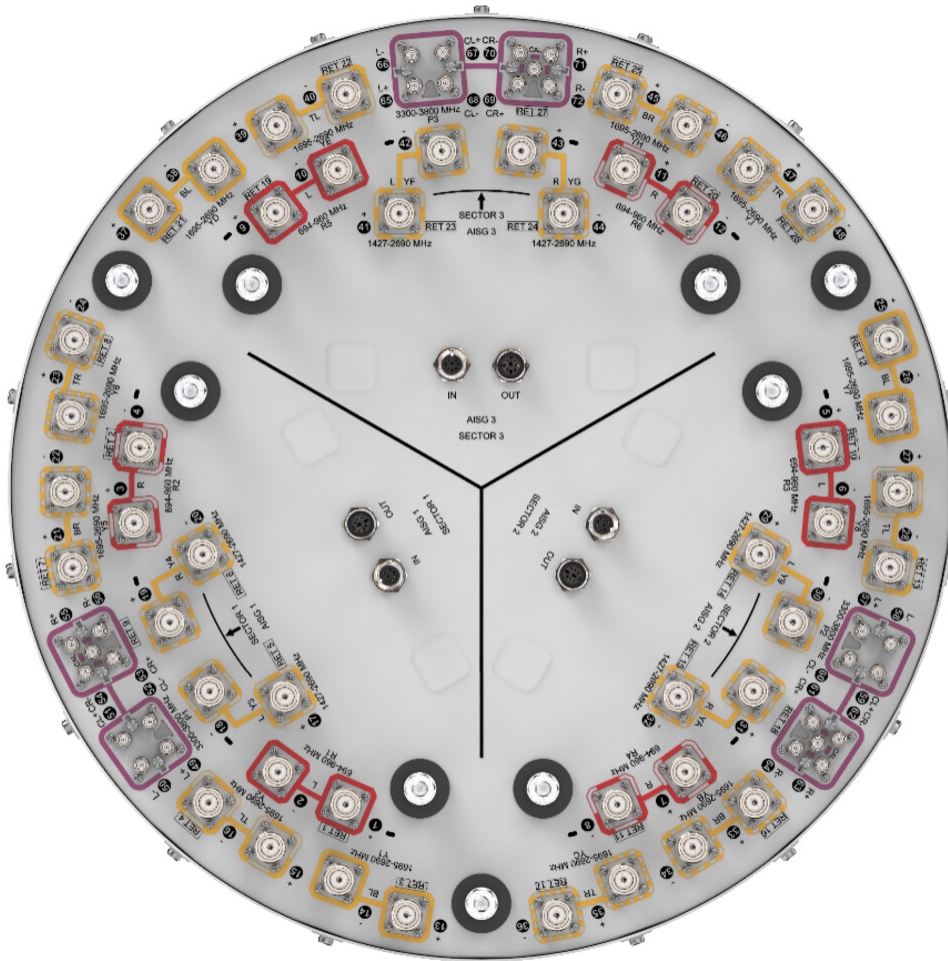
3X-RRZZV4S4-65DR27



Array ID	Frequency (MHz)	RF Connector	RET (SRET)	AISG No.	AISG RET UID
R1	694-960	1 - 2	1	AISG1	CPxxxxxxxxxxxxxxxxR1
R2	694-960	3 - 4	2		CPxxxxxxxxxxxxxxxxR2
Y1	1695-2690	13-14	3		CPxxxxxxxxxxxxxxxxY1
Y2	1695-2690	15-16	4		CPxxxxxxxxxxxxxxxxY2
Y3	1427-2690	17-18	5		CPxxxxxxxxxxxxxxxxY3
Y4	1427-2690	19-20	6		CPxxxxxxxxxxxxxxxxY4
Y5	1695-2690	21-22	7		CPxxxxxxxxxxxxxxxxY5
Y6	1695-2690	23-24	8		CPxxxxxxxxxxxxxxxxY6
P1	3300-3800	49 - 56	9	CPxxxxxxxxxxxxxxxxP1	
R3	694-960	5 - 6	10	AISG2	CPxxxxxxxxxxxxxxxxR3
R4	694-960	7 - 8	11		CPxxxxxxxxxxxxxxxxR4
Y7	1695-2690	25-26	12		CPxxxxxxxxxxxxxxxxY7
Y8	1695-2690	27-28	13		CPxxxxxxxxxxxxxxxxY8
Y9	1427-2690	29-30	14		CPxxxxxxxxxxxxxxxxY9
YA	1427-2690	31-32	15		CPxxxxxxxxxxxxxxxxYA
YB	1695-2690	33-34	16		CPxxxxxxxxxxxxxxxxYB
YC	1695-2690	35-36	17		CPxxxxxxxxxxxxxxxxYC
P2	3300-3800	57 - 64	18	CPxxxxxxxxxxxxxxxxP2	
R5	694-960	9 - 10	19	AISG3	CPxxxxxxxxxxxxxxxxR5
R6	694-960	11 - 12	20		CPxxxxxxxxxxxxxxxxR6
YD	1695-2690	37-38	21		CPxxxxxxxxxxxxxxxxYD
YE	1695-2690	39-40	22		CPxxxxxxxxxxxxxxxxYE
YF	1427-2690	41-42	23		CPxxxxxxxxxxxxxxxxYF
YG	1427-2690	43-44	24		CPxxxxxxxxxxxxxxxxYG
YH	1695-2690	45-46	25		CPxxxxxxxxxxxxxxxxYH
YJ	1695-2690	47-48	26		CPxxxxxxxxxxxxxxxxYJ
P3	3300-3800	65 - 72	27	CPxxxxxxxxxxxxxxxxP3	

Port Configuration

3X-RRZZV4S4-65DR27



Electrical Specifications

Impedance	50 ohm
Operating Frequency Band	1427 – 2690 MHz 1695 – 2690 MHz 3300 – 3800 MHz 694 – 960 MHz
Polarization	±45°

Electrical Specifications, Broadcast 65°

Frequency Band, MHz	3300–3600	3600–3800
Gain, dBi	17.9	19
Beamwidth, Horizontal at 3 dB, degrees	65	65
Beamwidth, Vertical, degrees	6.4	6
Front-to-Back Total Power at 180° ± 30°, dB	27	27

3X-RRZZV4S4-65DR27

USLS (First Lobe), dB	17	17
------------------------------	----	----

Electrical Specifications, Service Beam

	3300–3600	3600–3800
Frequency Band, MHz		
Steered 0° Gain, dBi	19.6	20.1
Steered 0° Beamwidth, Horizontal, degrees	28	26
Steered 0° Front-to-Back Total Power at 180° ± 30°, dB	27	28
Steered 0° Horizontal Sidelobe, dB	14	13
Steered 30° Gain, dBi	19.3	19.1
Steered 30° Beamwidth, Horizontal, degrees	27	27
Steered 30° Front-to-Back Total Power at 180° ± 30°, dB	27	27

Electrical Specifications, Soft Split

	3300–3600	3600–3800
Frequency Band, MHz		
Gain, dBi	19.2	18.9
Beamwidth, Horizontal, degrees	30	33
Front-to-Back Total Power at 180° ± 30°, dB	27	26

Mechanical Specifications

Wind Speed, maximum	241 km/h (150 mph)
----------------------------	--------------------

Packaging and Weights

Width, packed	755 mm 29.724 in
Depth, packed	692 mm 27.244 in
Length, packed	3180 mm 125.197 in
Weight, gross	165 kg 363.762 lb

Regulatory Compliance/Certifications

Agency	Classification
ISO 9001:2015	Designed, manufactured and/or distributed under this quality management system

3X-RRZZV4S4-65DR27

* Footnotes

Performance Note

Severe environmental conditions may degrade optimum performance