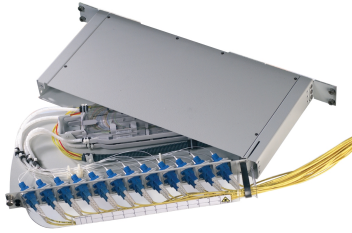


FOMS-PANELS



FOMS-FPS and FOMS-FPS-HD Fiber Termination/Splice Panels

- Angled connector patch panel reduces the risk of eye damage and ensures a positive fiber management for the equipment jumpers
- Shelf can be delivered with pre-fibered pigtails or a pre-stubbed IFC (intrafacility cable)
- Pivoting tray offers easy access to shelf's interior, even when equipment patch cords are installed

FOMS-FPS

The front patching/splicing shelf, FOMS-FPS, is a multi-purpose mechanical shelf assembly for a fiber management system in a rack environment. Its compact design and high-density capacity allow the FOMS-FPS to deliver carrier-class fiber management to central offices, POPs, FTTH, mobile systems and LANs.

Two versions are available:

- Patching only
- Patching & splicing to terminate loose tube, central core, IFC and ribbon cables

FOMS-FPS-HD

Designed for fiber management in a rack environment, the FOMS-FPS-HD is a highdensity, multi-purpose mechanical shelf with front patching and optional single element splicing. Its compact design makes it possible to handle a large amount of fibers in a small footprint. FOMS-FPS-HD delivers carrier-class fiber management to central offices and points-of-presence, as well as FTTH, mobile and local area networks.

Two versions are available:

- Patching only
- Patching and splicing to terminate loose tube, central core, IFC (intrafacility cable) and break-out cables

Product Classification

Product Type Fiber splice panel

Ordering Tree

FOMS-PANELS

FOMS-FPS - X - X X XX - XX

Chassis type				Number of pigtails and/or connector ports								
<input type="radio"/>	19" - 44 mm high			48	(for LC and MU only)							
Shelf type				24								
P	Patching only (jumpers, break-out cable)			16	(not for LC and MU)							
S	Splicing and patching (loose tube cable, ribbon, IFC)			12	(not for LC and MU)							
				0								
Tray type/pigtails				Connector adapter with retainer								
Secondary coated pigtails included		Splice protector		NN No connectors/pigtails								
				Min.return loss								
				SC	FC	E2000	LC	DIN	ST	MU		
Not applicable (patching only)				Single Mode Standard								
				45 dB (PC)								
No		SMOUV*							DO	TO		
No		ANT*		S1	F1		L1				U1	
Yes		SMOUV*		S2	F2	E9	L2					
Yes		ANT*		S3								
				Single Mode Low Loss								
				50 dB (UPC)								
				60 dB (APC 8°)								
				60 dB (APC 9°)								
				Single Mode Consumer Grade								
				50 dB (UPC)								
				60 dB (APC 8°)								
				Multi Mode								
				50/900 μ								
				62.5/900 μ**								

* Splice protectors not included in the kit
 ** In case of adapters only (no pigtails included) use S5D, F5D, E5D, L5D and T5D.

FOMS-FPS-HD - X - X X XX - XXX

Chassis type				Number of patch positions					
K	19" - 44mm high			15 inch		19 inch			
J	19" - 88mm high			SC	LC	SC	LC		
R	15" - 88mm high			1HU	-	-	K	48	
Q	15" - 125mm high			2HU	R	48	96	J	96
				3HU	Q	72	-	-	-
Shelf type				Connector type					
P	Patching only (jumpers, break-out cable)			Connector		min. return loss			
S	Patching and splicing (loose tube cable, breakout, IFC)			SC	LC				
				Single-mode standard (Grade C)					
				S1	L1	50 dB (UPC)			
				S2	L2	60 dB (APC 8°)			
				Single-mode superior (Grade B)					
				SF	LF	50 dB (UPC)			
				SG	LG	60 dB (APC 8°)			
Tray type/pigtails									
Jumpers leave shelf									
Right front ^(a)		Left front							
N	M	Patching only, no pigtail, no splice protector							
I	K	With splicing (for SMOUV splice protector ^(b)); secondary coated pigtails included							

(a) Standard configuration
 (b) Splice protectors not included in the kit and must be ordered separately