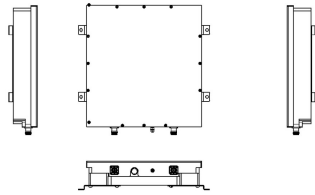


7843675-00



Double Notch Filter for 900 MHz UL Protection

Product Classification

Product Type Filter

General Specifications

Color Grey (RAL 7047, Telegrau)

RF Connector Interface 4.3-10 Female

RF Inputs, quantity 1

RF Outputs, quantity 1

Dimensions

Height 79 mm | 3.11 in

Width 433 mm | 17.047 in

Depth 425 mm | 16.732 in

Electrical Specifications

Return Loss, minimum 18 dB

Impedance 50 ohm

Electrical Specifications, Band Pass

Frequency Range, MHz	825–827	827–843	843–845	870–872	872–888	888–889.7
Insertion Loss, maximum, dB	1.3		1.3	1.8		1.8
Insertion Loss, typical, dB		0.7			0.7	

Electrical Specifications, Band Reject

Frequency Range, MHz 891.6–896

Attenuation, minimum, dB 83

Environmental Specifications

Operating Temperature -10 °C to +50 °C (+14 °F to +122 °F)

7843675-00

Relative Humidity Up to 93%, non-condensing

Ingress Protection Test Method IEC 60529:2001, IP67

Packaging and Weights

Weight, without mounting hardware 19 kg | 41.888 lb

Regulatory Compliance/Certifications

Agency

CHINA-ROHS

ROHS

UK-ROHS

Classification

Above maximum concentration value

Compliant/Exempted

Compliant/Exempted

