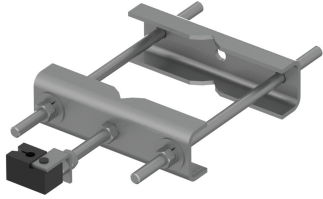


# VZWSMART-MSK9L | UNIVERSAL LEG CLAMP FOR LARGER LEG



## UNIVERSAL LEG CLAMP FOR LARGER LEG

Large Tower Leg Clamp, Mounts up to 6-5/8" round or 6" 60 degree angle or 4-1/2" 90 degree angle Tower legs

### Product Classification

**Product Type** Clamp set

### General Specifications

**Mounting** Round and angle legs

### Dimensions

**Mounting Diameter, maximum** 168.275 mm | 6.625 in

**Mounting Diameter, minimum** 38.1 mm | 1.5 in

### Material Specifications

**Material Type** Hot dip galvanized steel

### Packaging and Weights

**Included** Clamp halves | Threaded rod

**Packaging quantity** 1

### Regulatory Compliance/Certifications

| Agency     | Classification                    |
|------------|-----------------------------------|
| CHINA-ROHS | Above maximum concentration value |
| ROHS       | Compliant/Exempted                |
| UK-ROHS    | Compliant/Exempted                |

