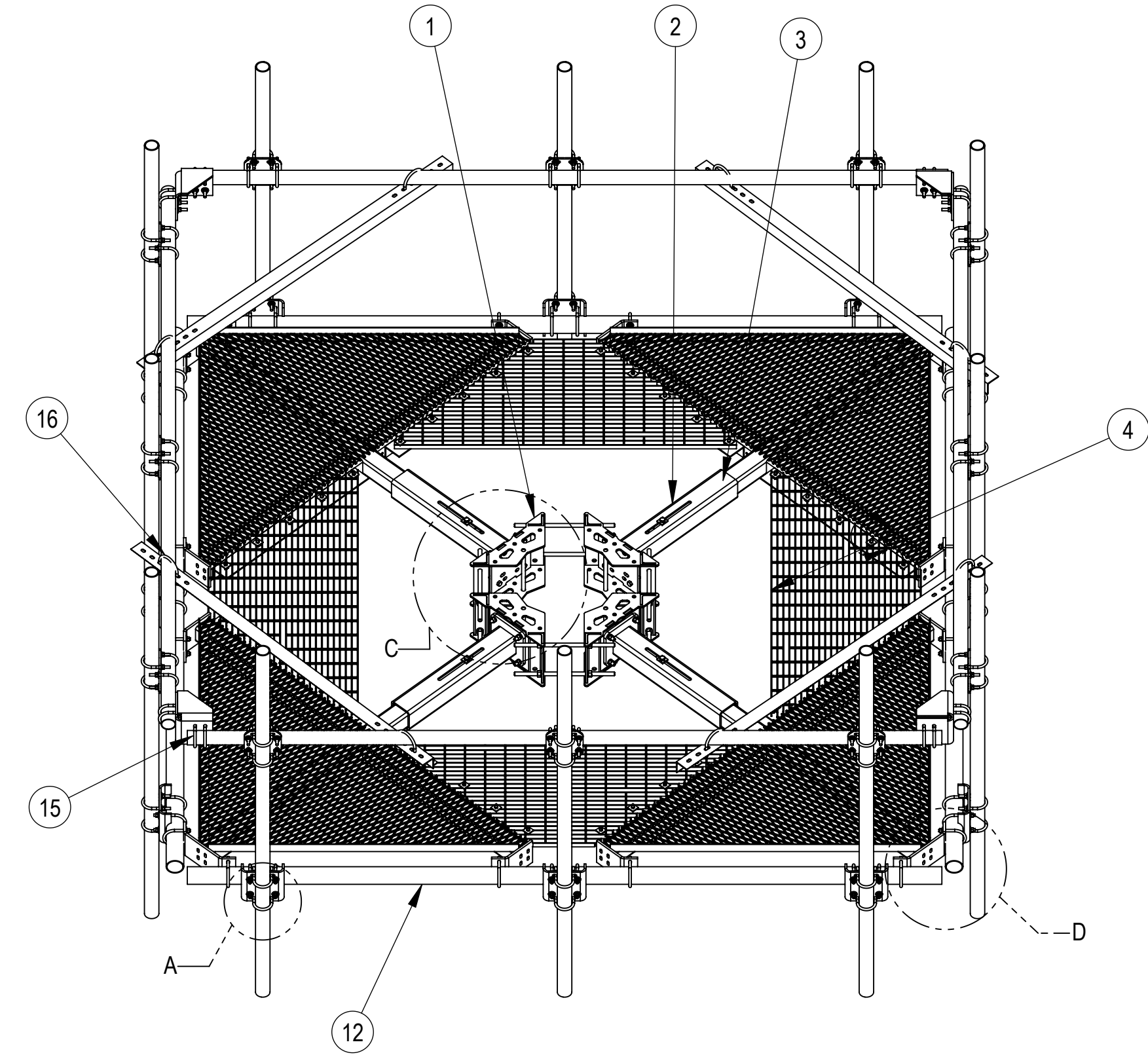
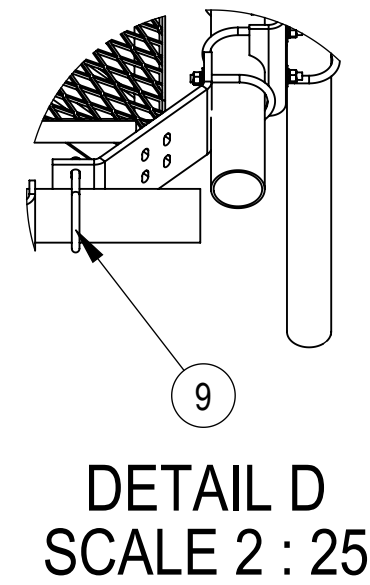
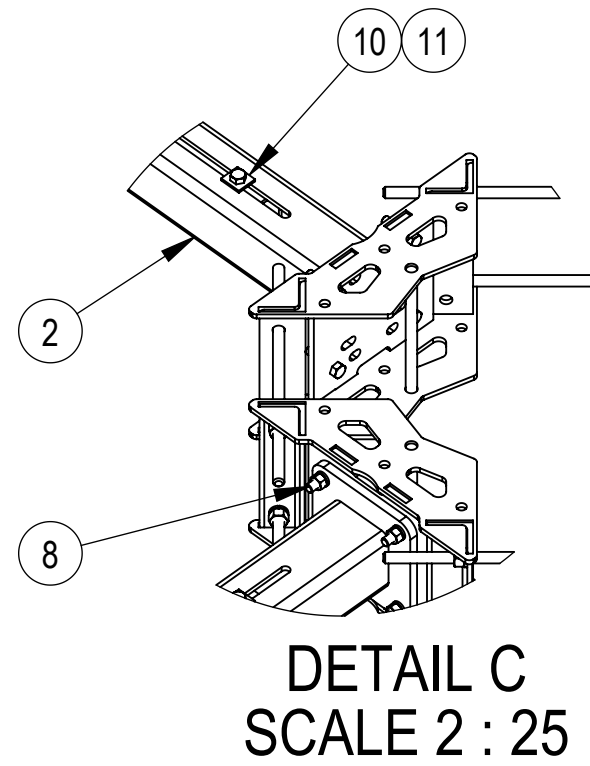
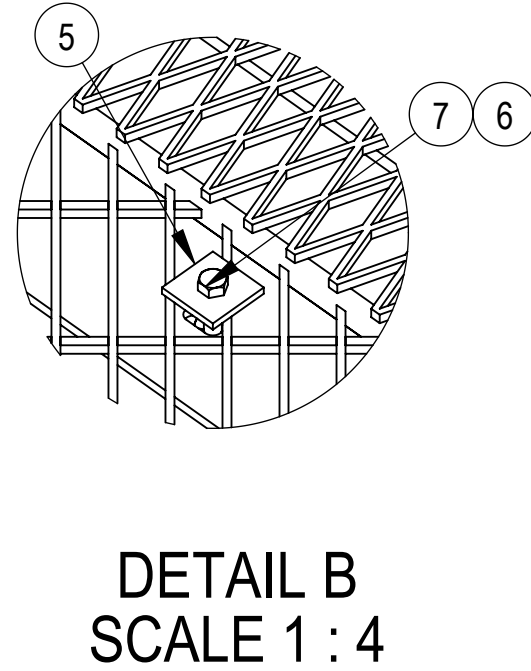
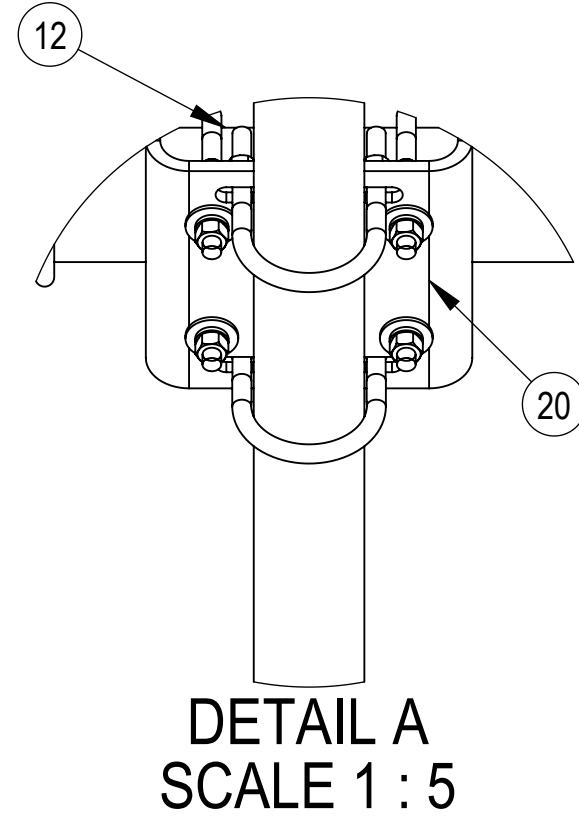


- 1.0 GENERAL NOTES
 1.1 ALL IMPERIAL DIMENSIONS ARE IN BRACKETS [X.XX]
 1.2 FOR PATENT INFO: <https://www.cs-pat.com>
 2.0 DESIGN NOTES
 3.0 MANUFACTURING/SPECIAL REQUIREMENTS
 3.1 TIGHTEN ALL BOLTS SECURING FLAT PLATES BY THE TURN-OF-NUT METHOD. TIGHTEN ALL U-BOLTS USING TURN-OF-NUT METHOD WITH ATTENTION TO LEAVE EQUAL DISTANCE AND EQUAL FORCE ON EACH LEG OF THE U-BOLT .
 4.0 TEST
 5.0 PACKAGING
 5.1 PACKAGING SHALL MEET COMMSCOPE REQUIRMENTS PER DOCUMENT IS-PL-3005
 5.2 PRINTED DOCUMENT TO BE PLACED INSIDE POLYBAG AND THEN IN SHIPPING CONTAINER
 5.3 EXTRA HARDWARE MAYBE SUPPLIED, BAGGED AND SHIPPED.

REVISIONS			
REV.	DESCRIPTION	DATE	APPROVED
A	INITIAL RELEASE	XG1026 20SEP22	XK1001 40156793CMO



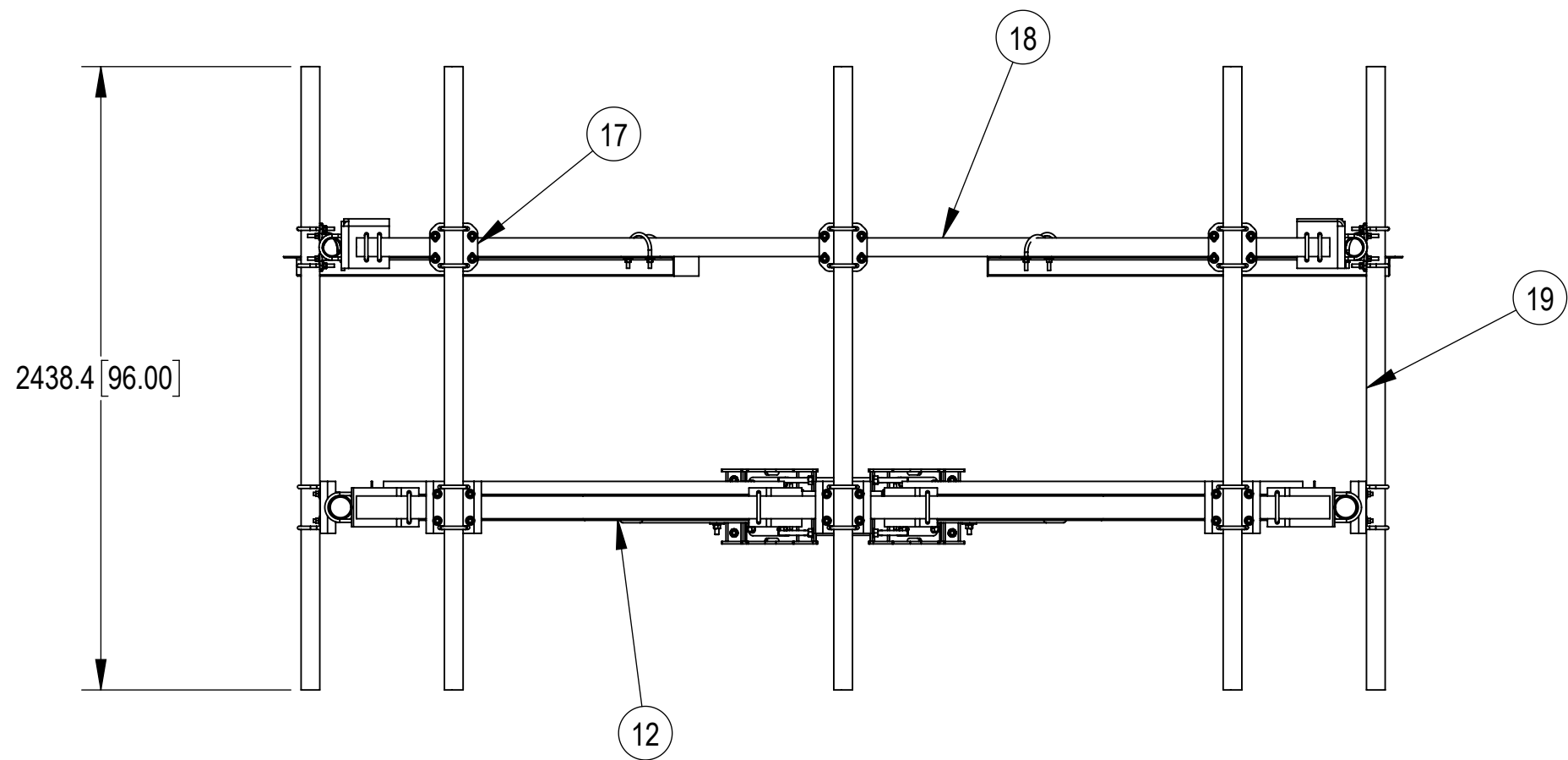
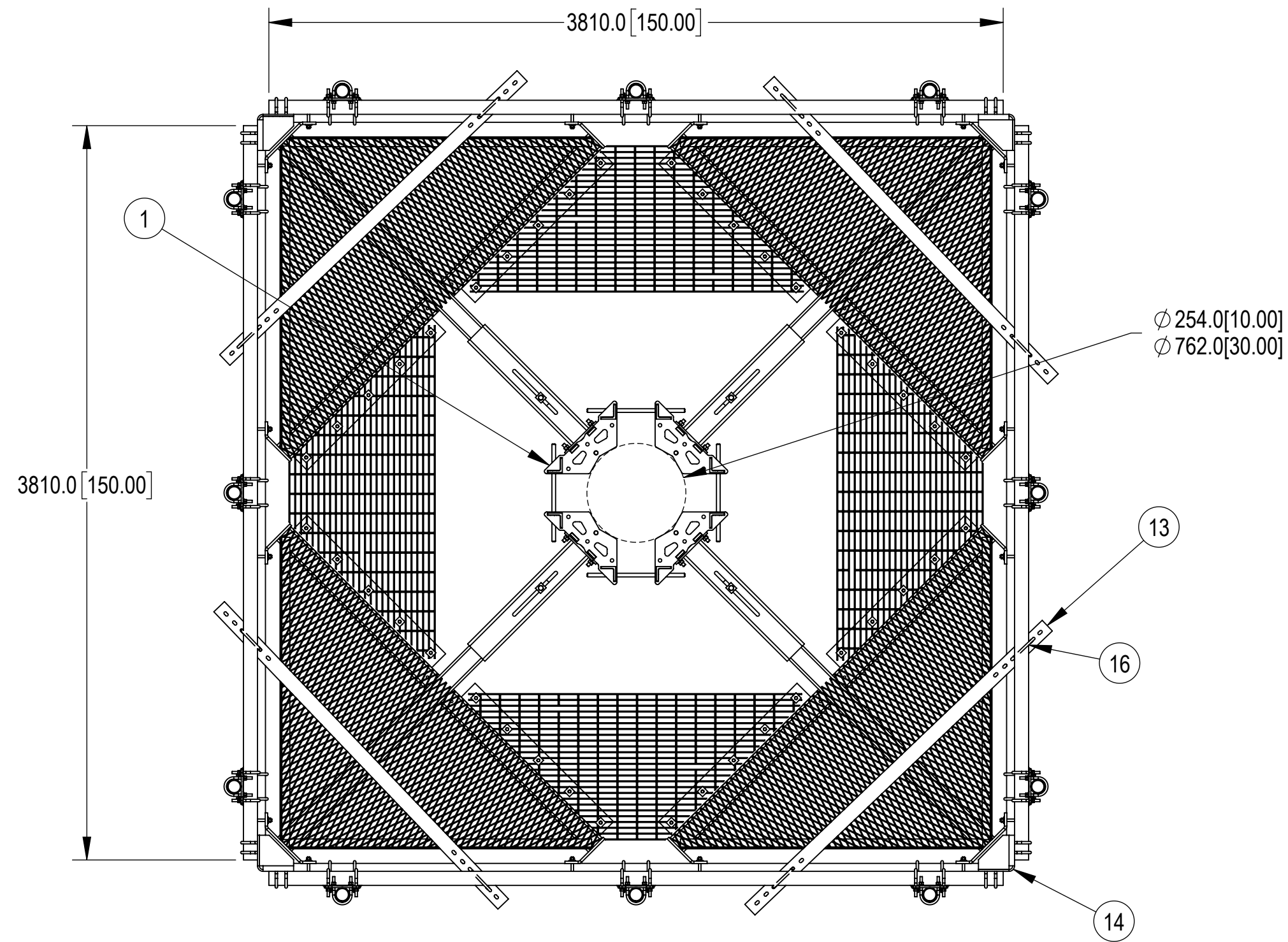
COMPONENT PART NUMBERS PROVIDED FOR ASSEMBLY PURPOSES;
 INDIVIDUAL COMPONENTS MAY BE SHIPPED AS PARTS WITHIN AN INCLUDED KIT.

ITEM	PART NO.	DESCRIPTION	QTY.	WEIGHT	NOTE
1	MC-RM1030-4	FOUR SECTOR RING MOUNT, 10-30 OD	1	204.51 LBS	
2	MTC820102	SLIDER BASE	4	65.55 LBS	
3	MTC820103	PLATFORM	4	298.14 LBS	
4	MTC820113	GRATING CORNER FILLER	4	62.78 LBS	
5	MT-387	SQUARE WASHER, 1-1/2" X 1-1/2" W/ 7/16" HOLE	40	49.25 LBS	
6	GWF-03	3/8" GALV FLAT WASHER	40	0.01 LBS	
7	GB-03225	3/8" X 2-1/4" GALV BOLT KIT	40	0.09 LBS	
8	GB-0524A	5/8" X 2-1/2" GALV BOLT KIT (A325)	16	0.30 LBS	
9	GUB-4355	1/2" X 3-5/8" X 5" GALV U-BOLT KIT	16	0.72 LBS	
10	MT389	SQUARE WASHER, 1-1/2" X 1-5/8" W/ 11/16" HOLE	8	49.97LBS	
11	GB-0570A	5/8" X 7" GALV BOLT KIT A325	4	0.69 LBS	
12	MT21601	PIPE, Ø 3.5" OD x 150"	4	75.17 LBS	
13	MTC343205-00	HANDRAIL SUPPORT ANGLE	4	25.59 LBS	
14	MTC343204-00	CORNER BRACKET	4	13.92 LBS	
15	GUB-4352	1/2" X 3" X 5-1/4" GALV U-BOLT	16	0.71 LBS	
16	GUB-4435	1/2" x 4-3/8" x 5" Galv U-Bolt Kit *	8	0.73 LBS	
17	XP-2525	CROSSOVER PLATE KIT, 2-7/8 OD X 2-7/8 OD	12	8.37 LBS	
18	MT546150120	2.88 OD X 150" LONG PIPE	4	44.29 LBS	
19	MT54696	PIPE, 2.875"OD X 96"	12	45.96 LBS	
20	MT-219M-H	3.5" OD X 2-7/8" OD CLAMP BRACKET ASSY	12	12.80 LBS	

COMMSCOPE, INC. OF NORTH CAROLINA

TOLERANCES		SAP MATERIAL MASTER	
0 PLACE X[.X] ± 6[0.25]	2 PLACE .XX[.XXX] ± 1.50[0.06]	MCHD-PK12S4-96	
1 PLACE .X[.XX] ± 3.0[0.12]	ANGLES ± 2°		
FINISH		MATERIAL	
DENSITY 3401.05 lbs/in³ MASS 12051 lbs VOLUME 118400 in³ SURFACE AREA 118400 in²		NAME XG1026 DATE 09/21/2022 RW LS1146 DATE 11/30/2022 AD XK1001 DATE 11/30/2022 RE LS1146 DATE 11/30/2022 ECN 40156793CMO	
DENSITY 1545933.1232 g/mm³ MASS 197493357.4508 grams VOLUME 76387015.4574 mm³ SURFACE AREA 76387015.4574 mm²		TITLE MP,MC-PKHD,10-30" DIA,12 FT,HR,12 AP SCALE 1:25 DOCUMENT NO. MCHD-PK12S4-12-96	
HEIGHT 2438.4[96.00]	SIZE A2	Auth Group	INSL
LENGTH 3810[150.00]	VERSION 00	MODEL RE	STATUS A
WIDTH 3810[150.00]	REVISION 00	VERSION 00	DRAWING STATUS RE
		REVISION A	REVISION A

SHEET 1 OF 2



COMMSCOPE, INC. OF NORTH CAROLINA				
TITLE MP,MC-PKHD,10-30" DIA,12 FT,HR,12 AP				
SIZE A2	SCALE 1:25	DOCUMENT NO. MCHD-PK12S4-12-96		
DRAWING				SHEET
VERSION 00	STATUS RE	REVISION A	2 OF 2	

© 2022 CommScope, Inc. Confidential