

RRV4-65B-R6H4VB-V2



12-port sector antenna, 4x 694–960 and 8x 1695–2690 MHz, 65° HPBW, 6x RET.

- All Internal RET actuators are connected in "Cascaded SRET" configuration
- Array configuration provides capability for 4T4R (4x MIMO) on Low band and Dual 4T4R (4x MIMO) on High band
- Non-stacked high band array design provides higher gain and narrower vertical beamwidth than traditional antenna designs

General Specifications

Antenna Type	Sector
Band	Multiband
Color	Light Gray (RAL 7035)
Grounding Type	RF connector inner conductor and body grounded to reflector and mounting bracket
Performance Note	Outdoor usage
Radome Material	Fiberglass, UV resistant
Radiator Material	Aluminum
Reflector Material	Aluminum
RF Connector Interface	4.3-10 Female
RF Connector Location	Bottom
RF Connector Quantity, mid band	8
RF Connector Quantity, low band	4
RF Connector Quantity, total	12

Remote Electrical Tilt (RET) Information

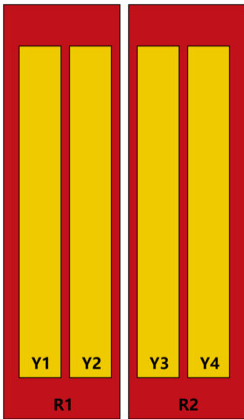
RET Hardware	CommRET v2
RET Interface	8-pin DIN Female 8-pin DIN Male
RET Interface, quantity	1 female 1 male
Input Voltage	10–30 Vdc
Internal RET	Low band (2) Mid band (4)
Power Consumption, active state, maximum	10 W
Power Consumption, idle state, maximum	2 W
Protocol	3GPP/AISG 2.0 (Single RET)

RRV4-65B-R6H4VB-V2

Dimensions

Width	499 mm 19.646 in
Depth	199 mm 7.835 in
Length	2100 mm 82.677 in
Net Weight, antenna only	37.1 kg 81.791 lb

Array Layout



Array ID	Frequency (MHz)	RF Connector	HPBW	RET (SRET)	AISG No.	AISG RET UID
R1	694-960	1 - 2	65°	1	AISG1	CPxxxxxxxxxxxxR1
R2	694-960	3 - 4	65°	2	AISG1	CPxxxxxxxxxxxxR2
Y1	1695-2690	5 - 6	65°	3	AISG1	CPxxxxxxxxxxxxY1
Y2	1695-2690	7 - 8	65°	4	AISG1	CPxxxxxxxxxxxxY2
Y3	1695-2690	9 - 10	65°	5	AISG1	CPxxxxxxxxxxxxY3
Y4	1695-2690	11 - 12	65°	6	AISG1	CPxxxxxxxxxxxxY4

(Sizes of colored boxes are not true depictions of array sizes)

Port Configuration



Electrical Specifications

Impedance	50 ohm
Operating Frequency Band	1695 – 2690 MHz 694 – 960 MHz
Polarization	±45°

RRV4-65B-R6H4VB-V2

Total Input Power, maximum 1,000 W

Electrical Specifications

	R1,R2	R1,R2	R1,R2	Y1-Y4	Y1-Y4	Y1-Y4	Y1-Y4	Y1-Y4
Frequency Band, MHz	694–806	790–890	880–960	1695–1880	1850–1990	1920–2200	2300–2400	2500–2690
RF Port	1-4	1-4	1-4	5-12	5-12	5-12	5-12	5-12
Gain, dBi	15.7	16.1	16.3	16.9	17.1	17.2	17.6	18
Beamwidth, Horizontal, degrees	65	67	68	70	67	68	62	57
Beamwidth, Vertical, degrees	9.8	8.7	8	6.6	6.3	5.9	5.3	4.8
Beam Tilt, degrees	2–12	2–12	2–12	2–12	2–12	2–12	2–12	2–12
USLS (First Lobe), dB	19	18	17	15	17	19	21	19
Front-to-Back Ratio, Copolarization 180° ± 30°, dB	27	29	29	26	27	27	27	27
Isolation, Cross Polarization, dB	25	25	25	25	25	25	25	25
Isolation, Inter-band, dB	25	25	25	25	25	25	25	25
VSWR Return loss, dB	1.5 14.0	1.5 14.0	1.5 14.0	1.5 14.0	1.5 14.0	1.5 14.0	1.5 14.0	1.5 14.0
PIM, 3rd Order, 2 x 20 W, dBc	-150	-150	-150	-150	-150	-150	-150	-150
Input Power per Port, maximum, watts	250	250	250	200	200	200	200	200

Electrical Specifications, BASTA

	694–806	790–890	880–960	1695–1880	1850–1990	1920–2200	2300–2400	2500–2690
Frequency Band, MHz	694–806	790–890	880–960	1695–1880	1850–1990	1920–2200	2300–2400	2500–2690
Gain by all Beam Tilts, average, dBi	15.3	15.9	16.1	16.4	16.7	16.8	17.1	17.4
Gain by all Beam Tilts Tolerance, dB	±0.6	±0.4	±0.4	±0.6	±0.6	±0.5	±0.5	±0.6
Beamwidth, Horizontal Tolerance, degrees	±4	±4	±4	±11	±10	±7	±7	±6
Beamwidth, Vertical Tolerance, degrees	±0.8	±0.6	±0.5	±0.4	±0.3	±0.4	±0.2	±0.2
CPR at Boresight, dB	23	22	21	21	22	24	22	19

Mechanical Specifications

Wind Loading @ Velocity, frontal	608.0 N @ 150 km/h (136.7 lbf @ 150 km/h)
Wind Loading @ Velocity, lateral	291.0 N @ 150 km/h (65.4 lbf @ 150 km/h)
Wind Loading @ Velocity, rear	1,078.0 N @ 150 km/h (242.3 lbf @ 150 km/h)

RRV4-65B-R6H4VB-V2

Wind Speed, maximum 200 km/h (124 mph)

Packaging and Weights

Width, packed 570 mm | 22.441 in
Depth, packed 275 mm | 10.827 in
Length, packed 2375 mm | 93.504 in
Weight, gross 48.4 kg | 106.704 lb

Regulatory Compliance/Certifications

Agency	Classification
CHINA-ROHS	Below maximum concentration value
ISO 9001:2015	Designed, manufactured and/or distributed under this quality management system
ROHS	Compliant
UK-ROHS	Compliant



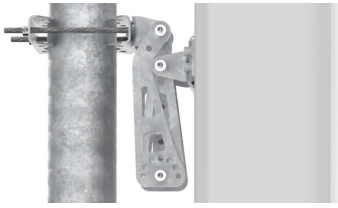
Included Products

BSAMNT-B92-08 – Wide Profile Antenna Downtilt Mounting Kit for 2.4 - 4.5 in (60 - 115 mm) OD round members. Kit contains one scissor top bracket set and one bottom bracket set.

* Footnotes

Performance Note Severe environmental conditions may degrade optimum performance

BSAMNT-B92-08



Wide Profile Antenna Downtilt Mounting Kit for 2.4 - 4.5 in (60 - 115 mm) OD round members. Kit contains one scissor top bracket set and one bottom bracket set.

Product Classification

Product Type Downtilt mounting kit

General Specifications

Application Outdoor

Color Silver

Dimensions

Compatible Diameter, maximum 115 mm | 4.528 in

Compatible Diameter, minimum 60 mm | 2.362 in

Weight, net 4.4 kg | 9.7 lb

Material Specifications

Material Type Galvanized steel

Packaging and Weights

Included Brackets | Hardware

Weight, gross 4.8 kg | 10.582 lb

Regulatory Compliance/Certifications

Agency	Classification
CE	Compliant with the relevant CE product directives
ISO 9001:2015	Designed, manufactured and/or distributed under this quality management system

