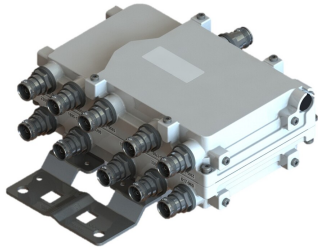


# SPX619212342T-43 | E14F20P21

---



Compact Twin Pentaplexer 617-960/AWS/PCS/WCS/ 3.3-4.2G, dc bypass on low ports, with 4.3-10 connectors

- New Combining Solution to introduce 5G, 3.5GHz band
- Industry leading PIM performance
- New 4.3-10 connectors for improved PIM performance and size reduction
- Suitable for feeders cables reduction
- dc/AISG pass-through on low frequency ports
- Clam shell configuration

## Product Classification

**Product Type** Pentaplexer

## General Specifications

**Color** Gray

**Modularity** 2-Twin

**Mounting** Pole | Wall

**Mounting Pipe Hardware** Band clamps (2)

**RF Connector Interface** 4.3-10 Female

**RF Connector Interface Body Style** Long neck

## Dimensions

**Height** 147 mm | 5.787 in

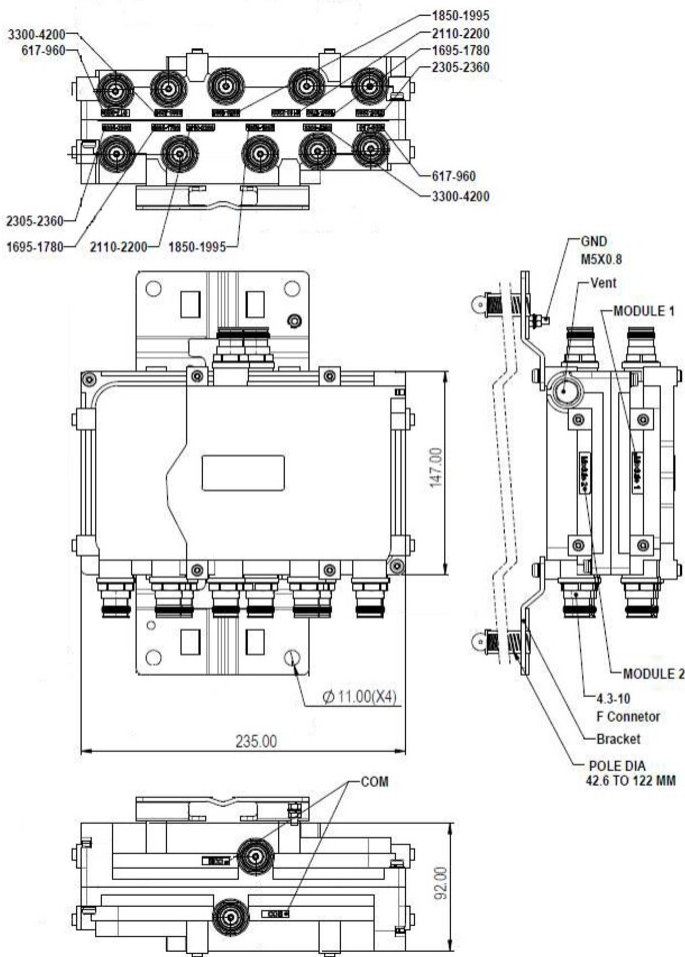
**Width** 235 mm | 9.252 in

**Depth** 92 mm | 3.622 in

**Mounting Pipe Diameter Range** 43–122 mm

## Outline Drawing

# SPX619212342T-43 | E14F20P21



## Electrical Specifications

<b>dc Pass-through</b>	Band 1
<b>Impedance</b>	50 ohm
<b>License Band, Band Pass</b>	APT 700   AWS 1700   AWS 2000   CEL 850   CEL 900   IMT 2100   LMR 800   PCS 1900   TDD 3500   USA 600   USA 700   WCS 2300

## Electrical Specifications, Common Port

<b>Composite Power, RMS</b>	500 W
-----------------------------	-------

## Electrical Specifications, dc Power/Alarm

<b>dc/AISG Pass-through Method</b>	Factory set
<b>dc/AISG Pass-through Path</b>	Branch 1
<b>dc/AISG Pass-through, combiner</b>	Branch 1

# SPX619212342T-43 | E14F20P21

<b>dc/AISG Pass-through, demultiplexer</b>	Branch 1
<b>Lightning Surge Current</b>	5 kA
<b>Lightning Surge Current Waveform</b>	8/20 waveform
<b>Pass-through Current, maximum</b>	2 A
<b>Voltage</b>	7–30 Vdc

## Electrical Specifications, AISG

<b>AISG Carrier</b>	2.176 MHz ± 100 ppm
<b>AISG Pass-through Current, maximum</b>	2 A

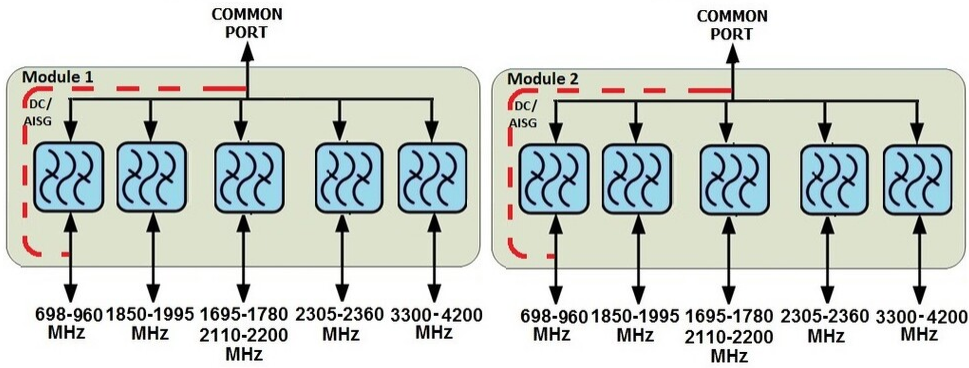
## Electrical Specifications

Sub-module	1   2	1   2	1   2	1   2	1   2
<b>Branch</b>	1	2	3	4	5
<b>Port Designation</b>	PORT 1 617-960	PORT 2 1850-1995	PORT 3 AWS	PORT 4 2305-2360	PORT 5 3300-4200

## Electrical Specifications, Band Pass

Frequency Range, MHz	617–960	1850–1995	1695–1780 2110–2200	2305–2360	3300–4200
<b>Insertion Loss, typical, dB</b>	0.15	0.2	0.2	0.25	0.15
<b>Return Loss, typical, dB</b>	21	20	20	20	20
<b>Isolation, minimum, dB</b>	50 @ 1850–1995 50 @ 2305–2360 50 @ 3300–4200 45 @ 1695–1780 2110–2200	50 @ 617–960 40 @ 1695–1780 50 @ 2110–2200 50 @ 2305–2360 50 @ 3300–4200	50 @ 617–960 40 @ 1850–1995 40 @ 2305–2360 50 @ 3300–4200	50 @ 617–960 45 @ 2110–2200 50 @ 1695–1780 50 @ 1850–1995 50 @ 3300–4200	50 @ 617–960 50 @ 1850–1995 50 @ 2305–2360 50 @ 1695–1780 2110–2200
<b>Input Power, RMS, maximum, W</b>	200	200	200	200	80
<b>Input Power, PEP, maximum, W</b>	1200	1200	1200	1200	800
<b>3rd Order PIM, typical, dBc</b>	-161	-161	-161	-161	-161
<b>3rd Order PIM Test Method</b>	Two +43 dBm CW Tones	Two +43 dBm CW Tones	Two +43 dBm CW Tones	Two +43 dBm CW Tones	Two +43 dBm CW Tones

## Block Diagram



## Mechanical Specifications

**Wind Speed, maximum** 240 km/h (149 mph)

## Environmental Specifications

**Operating Temperature** -40 °C to +65 °C (-40 °F to +149 °F)

**Corrosion Test Method** IEC 60068-2-11, 30 days

**Environmental Test Method** ETSI EN 300 019-1-4

**Ingress Protection Test Method** IEC 60529:2001, IP67

## Packaging and Weights

**Included** Mounting hardware

**Volume** 3.2 L

**Weight, without mounting hardware** 4.2 kg | 9.259 lb