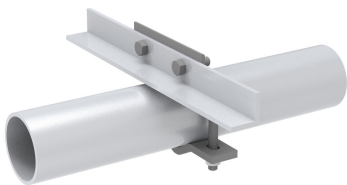


TES-SS-MSK7 | PIPE TO ANGLE CROSSOVER KIT



Pipe to Angle Cross Over Plate, Mounts up to 4-1/2" Pipe to Angled member, Pipe/Angle not included

Product Classification

Product Type Clamp plate

General Specifications

Mounting Crossover plate

Dimensions

Mounting Diameter, maximum 114.3 mm | 4.5 in

Material Specifications

Material Type Hot dip galvanized steel

Environmental Specifications

EPA with 1/2 in (12 mm) radial ice ft²

Packaging and Weights

Included Clamp assembly

Packaging quantity 1

* Footnotes

EPA with 1/2 in (12 mm) radial ice EPA—Effective Projected Area