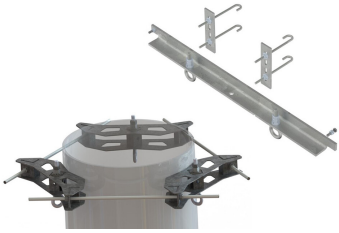


HOISTING-GRIP-ANCHORS

Base Product



Hoisting Grip Anchors

CommScope's Family of Hoisting Grip Anchors are designed to be field installed in various applications to allow for the attachment of cable hoisting grips.

- Cable Ladder Hoisting Grip Anchors
- Monopole Hoisting Grip Anchors
- Guyed Tower Hoisting Grip Anchors

-Purpose built structural supports designed to support 1000 pounds of cable per eye or up to 1000 pounds in combination. Ideal for Hybrid cable. Includes mounting eye bolt for attachment.

- Not to be used for hoisting.
- Competent person to make determination of usage on the structure.

Product Classification

Portfolio	CommScope®
Product Type	Hoisting Grip Anchor

Material Specifications

Material Type	Hot dip galvanized steel
----------------------	--------------------------